



THE RESERVE  
RESIDENCES



HORIZON

FLOOR PLANS

# THE HEART OF BUKIT TIMAH



Welcome to the heart of Bukit Timah, a prestigious and sought-after location that embodies the best of urban living. This prime estate is known for its upscale residences, top-tier schools, and abundance of greenery, offering an unparalleled lifestyle that combines the convenience of modern amenities with the serenity of lush greenery.

# SCHEMATIC DIAGRAM








## THE RESERVE RESIDENCES

-  1-Bedroom  
Type A1, A2
-  2-Bedroom  
Type B1-B7A
-  2-Bedroom + Study  
Type B8-B9A
-  3-Bedroom  
Type C1-C4
-  3-Bedroom + Study  
Type C5

## HORIZON

-  3-Bedroom Flexi  
Type C9-C10P
-  4-Bedroom  
Type D2-D4

## TREETOPS

-  4-Bedroom + Study  
Type G1
-  4-Bedroom + Study (Sky Terrace)  
Type D5
-  4-Bedroom + Study (Duplex)  
Type G2
-  5-Bedroom  
Type G3, G4
-  5-Bedroom (Sky Terrace)  
Type E1-E3
-  5-Bedroom (Duplex)  
Type G5
-  5-Bedroom (Penthouse)  
Type P1-P4

9 JALAN ANAK BUKIT

<div>Pool View</div> <div>Upper Bukit Timah Rd</div> <div>Jalan Jurong Kechil / Beauty World</div> <div>Pool View</div>													
UNIT / FLOOR	80	81	82	83	84	85	86	87	88	89	90		
17	SKY TERRACE												
16	A1	A1	C4	C4	A1	A2	A2	B3	C9	B7	A1		
15	A1	A1	C4	C4	A1	A2	A2	B3	C9	B7	A1		
14	A1	A1	C4	C4	A1	A2	A2	B3	C9	B7	A1		
13	A1	A1	C4	C4	A1	A2	A2	B3	C9	B7	A1		
12	A1	A1	C4	C4	A1	A2	A2	B3	C9	B7	A1		
11	A1	A1	C4	C4	A1	A2	A2	B3	C9	B7	A1		
10	A1	A1	C4	C4	A1	A2	A2	B3	C9	B7	A1		
9	A1	A1	C4	C4	A1	A2	A2	B3	C9	B7	A1		
8	A1	A1	C4	C4	A1	A2	A2	B3	C9	B7	A1		
7	A1	A1	C4	C4	A1	A2	A2	B3	C9	B7	A1		
6	A1	A1	C4	C4	A1	A2	A2	B3	C9	B7	A1		
5	LANDSCAPE		C4P	C4	A1	LANDSCAPE		B3	C9				
4	LANDSCAPE / RESIDENTIAL CARPARK			G1		LANDSCAPE / RESIDENTIAL CARPARK		G3		LANDSCAPE / RESIDENTIAL CARPARK			
3	RETAIL												
2	RETAIL												
1	RETAIL												
B1	RETAIL												
B1M	RETAIL												

11 JALAN ANAK BUKIT

Pool View				Jalan Jurong Kechil / Beauty World				Pool View	
91	92	93	94	95	96	97	98	99	
SKY TERRACE									
A1	C2	C10	B3	A2	A2	C3	D2	B1	
A1	C2	C10	B3	A2	A2	C3	D2	B1	
A1	C2	C10	B3	A2	A2	C3	D2	B1	
A1	C2	C10	B3	A2	A2	C3	D2	B1	
A1	C2	C10	B3	A2	A2	C3	D2	B1	
A1	C2	C10	B3	A2	A2	C3	D2	B1	
A1	C2	C10	B3	A2	A2	C3	D2	B1	
A1	C2	C10	B3	A2	A2	C3	D2	B1	
A1	C2	C10	B3	A2	A2	C3	D2	B1	
A1	C2	C10	B3	A2	A2	C3	D2	B1	
LANDSCAPE		C10	B3	LANDSCAPE		G2	D2P	LANDSCAPE	
PE / RESIDENTIAL CARPARK		G4		LANDSCAPE / RESIDENTIAL CARPARK			LANDSCAPE / RESIDENTIAL CARPARK		
BUS INTERCHANGE									
RETAIL									

13 JALAN ANAK BUKIT

Pool View      Jalan Jurong Kechill / Bukit Timah Nature Reserve      City View / Pool View

100	101	102	103	104	105	106	107	108
ROOFTERRACE		ROOFTERRACE						
		P4		WATER TANK		P1		
B5A	B9A	D2	B4A	B8		C10	B6	B5A
B5A	B9A	D2	B4A	B8	C2A	C10	B6	B5A
B5A	B9A	D2	B4A	B8	C2A	C10	B6	B5A
B5A	B9A	D2	B4A	B8	C2A	C10	B6	B5A
B5A	B9A	D2	B4A	B8	C2A	C10	B6	B5A
B5A	B9A	D2	B4A	B8	C2A	C10	B6	B5A
B5A	B9A	D2	B4A	B8	C2A	C10	B6	B5A
B5A	B9A	D2	B4A	B8	C2A	C10	B6	B5A
B5A	B9A	D2	B4A	B8	C2A	C10	B6	B5A
B5A	B9A	D2	B4A	B8	C2A	C10	B6	B5A
B5A	B9A	D2	B4A	B8	C2A	C10	B6	B5A
B5A	B9A	D2	B4A	B8	C2A	C10	B6	B5A
B5A	B9A	D2	B4A	B8	C2A	C10	B6	B5A
B5A	B9A	D2	B4A	B8	C2A	C10	B6	B5A
B5A	B9A	D2	B4A	B8	C2A	C10	B6	B5A
SKY TERRACE		D5	SKYTERRACE			E3		SKYTERRACE
B2	B9	D2	B4	B5	C2	C10	B3	B2
B2	B9	D2	B4	B5	C2	C10	B3	B2
B2	B9	D2	B4	B5	C2	C10	B3	B2
B2	B9	D2	B4	B5	C2	C10	B3	B2
B2	B9	D2	B4	B5	C2	C10	B3	B2
B2	B9	D2	B4	B5	C2	C10	B3	B2
B2	B9	D2	B4	B5	C2	C10	B3	B2
B2	B9	D2	B4	B5	C2	C10	B3	B2
B2	B9	D2	B4	B5	C2	C10	B3	B2
B2	B9	D2	B4	B5	C2	C10	B3	B2
LANDSCAPE		B9P	LANDSCAPE			C10P		
: / RESIDENTIAL CARPARK		G5	LANDSCAPE					
	RETAIL							
	RETAIL							
	RETAIL & SERVICE RESIDENCE CARPARK							





## FACILITIES LEVEL 4

### LEGEND

- 1 600m Jogging Trail (From Level 4 to Level 5)
- 2 Petunia Pavilion
- 3 Paloma Pavilion
- 4 Angelica Dining Pavilion with BBQ
- 5 Anise Dining Pavilion with BBQ
- 6 Hammock Garden
- 7 Foliage Garden (Thematic)
- 8 Palm Grove(Thematic)
- 9 Outdoor Fitness 1
- 10 The Perch Living Room

### OTHERS

- |                                  |                                   |                            |
|----------------------------------|-----------------------------------|----------------------------|
| A Residential Entrance (Level 3) | B Water Tanks (Level 12,17,31,32) | C Genset (Level 6)         |
| D Substation (Level 1)           | E Bin Centre (Level 1)            | F Cooling Towers (Level 4) |

## UNIT PLAN LEVEL 4

### HORIZON

- 4-Bedroom  
Type D2-D4

### TREETOPS

- 4-Bedroom + Study  
Type G1
- 4-Bedroom + Study (Duplex)  
Type G2
- 5-Bedroom  
Type G3, G4
- 5-Bedroom (Duplex)  
Type G5





## FACILITIES LEVEL 5

### LEGEND

- 1 Adventure Playground
- 2 Outdoor Fitness 2
- 3 Lovage Dining Pavilion
- 4 Changing Room with Sauna
- 5 The Raintree Function Room
- 6 The Alstonia Function Room
- 7 Casuarina Entertainment Rooms
- 8 Water Cascade
- 9 The Willow Function Room
- 10 Lemongrass Dining Pavilion
- 11 Linden Dining Pavilion
- 12 Terrace Deck
- 13 Grand Lawn
- 14 The Perch Reading Room
- 15 Commune Deck
- 16 50m Lap Pool

### OTHERS

- A Residential Entrance (Level 3)
- D Substation (Level 1)

- 17 Aqua Gym with Spa
- 18 Spa Pool
- 19 Family Pool
- 20 Aqua Cove
- 21 Play Pool
- 22 Kid's Pool
- 23 Play Lawn
- 24 Shorea Cabanas
- 25 Pool Cabanas
- 26 Garden Decks 1
- 27 Terrace Steps
- 28 Dog Run

- B Water Tanks (Level 12,17,31,32)
- E Bin Centre (Level 1)

## UNIT PLAN LEVEL 5

### THE RESERVE RESIDENCES

- 1-Bedroom Type A1, A2
- 2-Bedroom Type B1-B7A
- 2-Bedroom + Study Type B8-B9A
- 3-Bedroom Type C1-C4

### HORIZON

- 3-Bedroom Flexi Type C9-C10P
- 4-Bedroom Type D2-D4

### TREETOPS

- 4-Bedroom + Study (Duplex) Type G2
- 5-Bedroom (Duplex) Type G5

- C Genset (Level 6)
- F Cooling Towers (Level 4)





## FACILITIES LEVEL 6

### LEGEND

- 1 Retreat Cabanas
- 2 Kid's Play Corner
- 3 Zen Decks 1
- 4 Garden Deck 2
- 5 Outdoor Fitness 3
- 6 Swing Garden
- 7 Tennis Court
- 8 Recreational Court

## OTHERS

- |                                         |                                          |                                   |
|-----------------------------------------|------------------------------------------|-----------------------------------|
| <b>A</b> Residential Entrance (Level 3) | <b>B</b> Water Tanks (Level 12,17,31,32) | <b>C</b> Genset (Level 6)         |
| <b>D</b> Substation (Level 1)           | <b>E</b> Bin Centre (Level 1)            | <b>F</b> Cooling Towers (Level 4) |

## UNIT PLAN LEVEL 6-11

### CREEKSIDE

- 3-Bedroom  
Type C6-C8P
- 4-Bedroom  
Type D1, D1P

## LEVEL 6-16

### THE RESERVE RESIDENCES

- 1-Bedroom  
Type A1, A2
- 2-Bedroom  
Type B1-B7A
- 2-Bedroom + Study  
Type B8-B9A
- 3-Bedroom  
Type C1-C4

### HORIZON

- 3-Bedroom Flexi  
Type C9-C10P
- 4-Bedroom  
Type D2-D4





## UNIT PLAN LEVEL 18-30

### THE RESERVE RESIDENCES

- 2-Bedroom  
Type B1-B7A
- 2-Bedroom + Study  
Type B8-B9A
- 3-Bedroom  
Type C1-C4
- 3-Bedroom + Study  
Type C5

### HORIZON

- 3-Bedroom Flexi  
Type C9-C10P
- 4-Bedroom  
Type D2-D4

### OTHERS

- |                                                                                                                  |                                                                                                                   |                                                                                                            |
|------------------------------------------------------------------------------------------------------------------|-------------------------------------------------------------------------------------------------------------------|------------------------------------------------------------------------------------------------------------|
| <span style="border: 1px solid black; border-radius: 50%; padding: 2px;">A</span> Residential Entrance (Level 3) | <span style="border: 1px solid black; border-radius: 50%; padding: 2px;">B</span> Water Tanks (Level 12,17,31,32) | <span style="border: 1px solid black; border-radius: 50%; padding: 2px;">C</span> Genset (Level 6)         |
| <span style="border: 1px solid black; border-radius: 50%; padding: 2px;">D</span> Substation (Level 1)           | <span style="border: 1px solid black; border-radius: 50%; padding: 2px;">E</span> Bin Centre (Level 1)            | <span style="border: 1px solid black; border-radius: 50%; padding: 2px;">F</span> Cooling Towers (Level 4) |





## UNIT PLAN LEVEL 31

### THE RESERVE RESIDENCES

- 2-Bedroom  
Type B1-B7A
- 2-Bedroom + Study  
Type B8-B9A
- 3-Bedroom  
Type C1
- 3-Bedroom + Study  
Type C5

### HORIZON

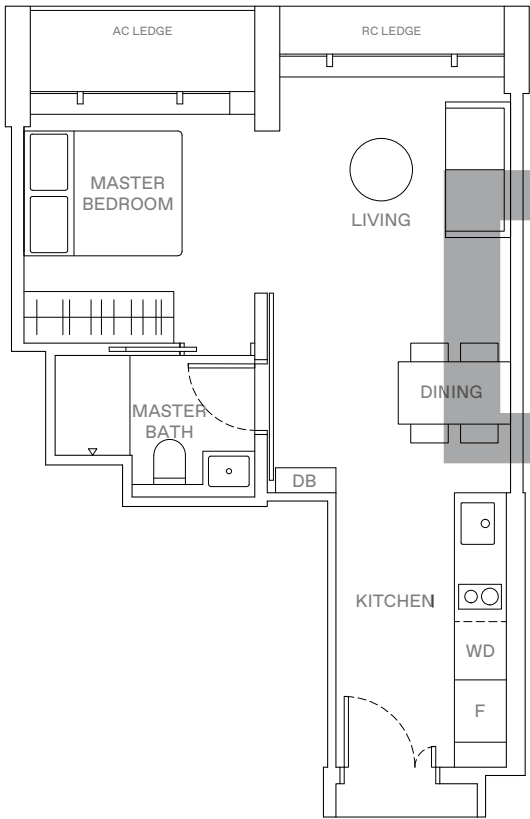
- 3-Bedroom Flexi  
Type C9-C10P
- 4-Bedroom  
Type D2-D4

### OTHERS

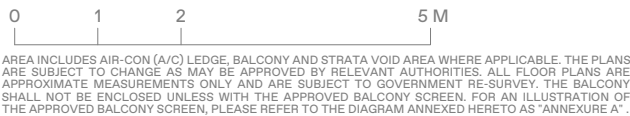
- |                                                                                                                                                                                                     |                                                                                                                                                                                                      |                                                                                                                                                                                               |
|-----------------------------------------------------------------------------------------------------------------------------------------------------------------------------------------------------|------------------------------------------------------------------------------------------------------------------------------------------------------------------------------------------------------|-----------------------------------------------------------------------------------------------------------------------------------------------------------------------------------------------|
| <span style="display: inline-block; width: 10px; height: 10px; border: 1px solid black; border-radius: 50%; background-color: #D3D3D3; margin-right: 5px;"></span> A Residential Entrance (Level 3) | <span style="display: inline-block; width: 10px; height: 10px; border: 1px solid black; border-radius: 50%; background-color: #D3D3D3; margin-right: 5px;"></span> B Water Tanks (Level 12,17,31,32) | <span style="display: inline-block; width: 10px; height: 10px; border: 1px solid black; border-radius: 50%; background-color: #D3D3D3; margin-right: 5px;"></span> C Genset (Level 6)         |
| <span style="display: inline-block; width: 10px; height: 10px; border: 1px solid black; border-radius: 50%; background-color: #D3D3D3; margin-right: 5px;"></span> D Substation (Level 1)           | <span style="display: inline-block; width: 10px; height: 10px; border: 1px solid black; border-radius: 50%; background-color: #D3D3D3; margin-right: 5px;"></span> E Bin Centre (Level 1)            | <span style="display: inline-block; width: 10px; height: 10px; border: 1px solid black; border-radius: 50%; background-color: #D3D3D3; margin-right: 5px;"></span> F Cooling Towers (Level 4) |

1 - BEDROOM . TYPE A1  
41 sqm | 441 sqft

9 Jalan Anak Bukit: #06-80 to #16-80, #05-84 to #16-84  
#06-81 to #16-81, #06-90 to #16-90 (Mirrored)  
11 Jalan Anak Bukit: #06-91 to #16-91

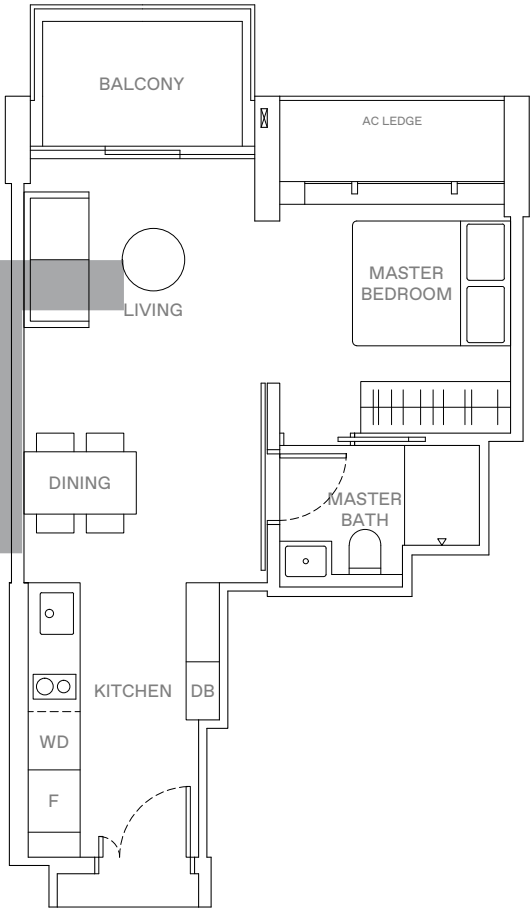


- LEGEND
- WD WASHER-DRYER
  - W/D WASHER AND DRYER
  - F FRIDGE
  - DB DISTRIBUTION BOX

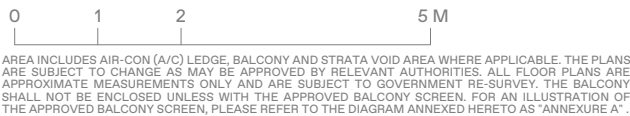


1 - BEDROOM . TYPE A2  
46 sqm | 495 sqft

9 Jalan Anak Bukit: #06-85 to #16-85  
#06-86 to #16-86 (Mirrored)  
11 Jalan Anak Bukit: #06-95 to #16-95  
#06-96 to #16-96 (Mirrored)



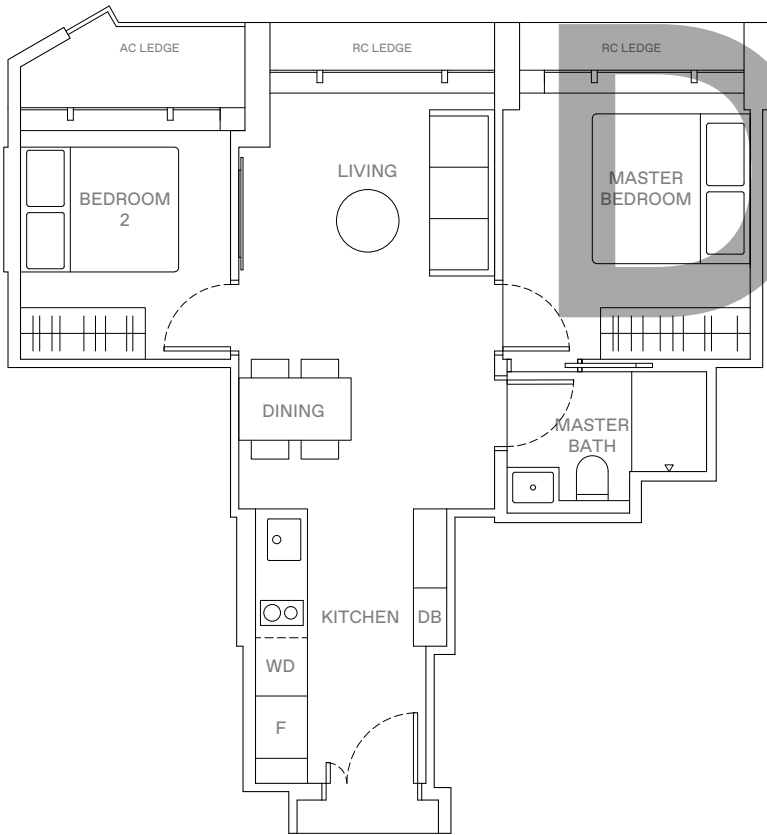
- LEGEND
- WD WASHER-DRYER
  - W/D WASHER AND DRYER
  - F FRIDGE
  - DB DISTRIBUTION BOX





2 - BEDROOM . TYPE B1  
52 sqm | 560 sqft

11 Jalan Anak Bukit: #06-99 to #16-99



LEGEND

- WD WASHER-DRYER
- W/D WASHER AND DRYER
- F FRIDGE
- DB DISTRIBUTION BOX

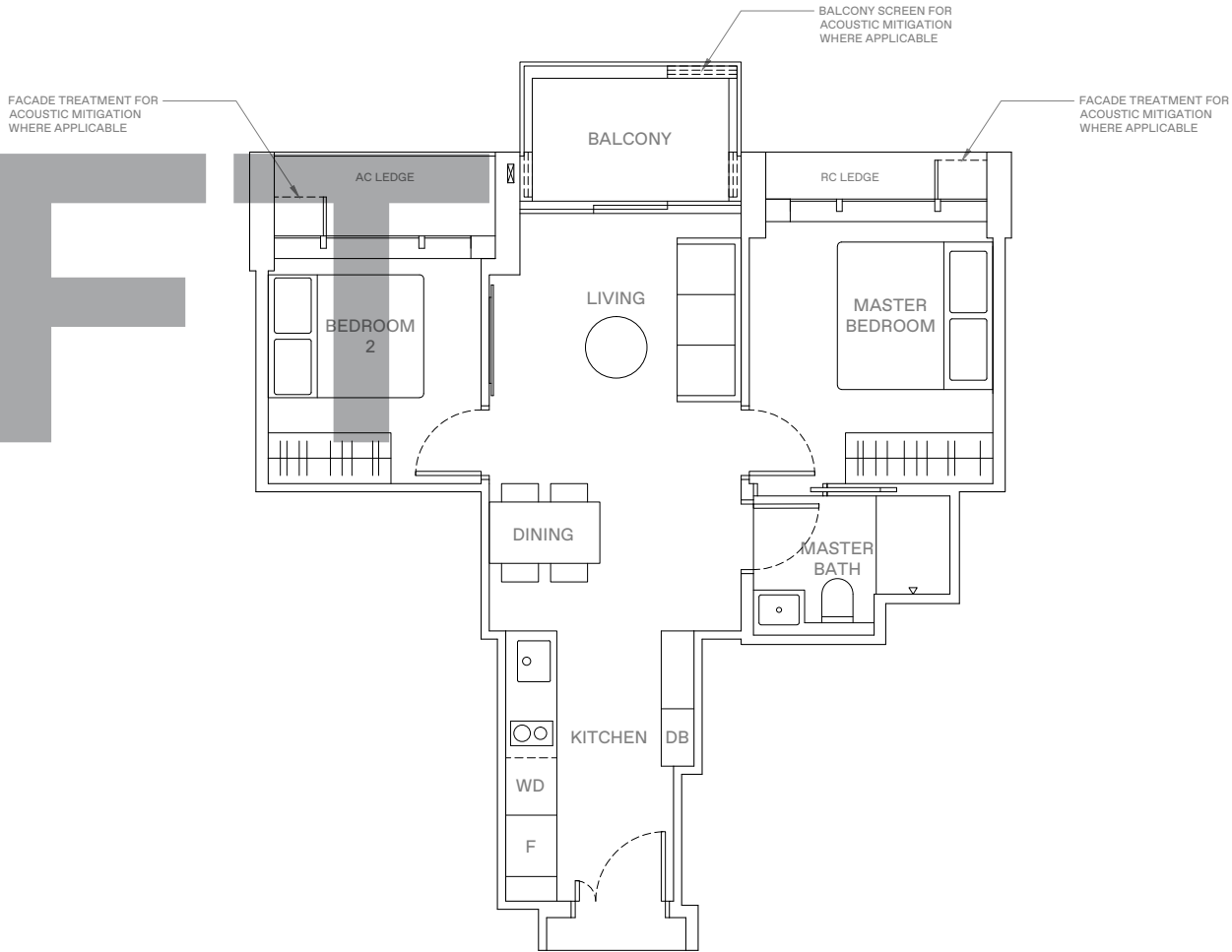


AREA INCLUDES AIR-CON (A/C) LEDGE, BALCONY AND STRATA VOID AREA WHERE APPLICABLE. THE PLANS ARE SUBJECT TO CHANGE AS MAY BE APPROVED BY RELEVANT AUTHORITIES. ALL FLOOR PLANS ARE APPROXIMATE MEASUREMENTS ONLY AND ARE SUBJECT TO GOVERNMENT RE-SURVEY. THE BALCONY SHALL NOT BE ENCLOSED UNLESS WITH THE APPROVED BALCONY SCREEN. FOR AN ILLUSTRATION OF THE APPROVED BALCONY SCREEN, PLEASE REFER TO THE DIAGRAM ANNEXED HERETO AS "ANNEXURE A".



2 - BEDROOM . TYPE B2  
57 sqm | 614 sqft

13 Jalan Anak Bukit: #06-100 to #16-100 (Mirrored)  
#06-108 to #16-108  
15 Jalan Anak Bukit: #06-109 to #16-109 (Mirrored)  
#06-117 to #16-117



LEGEND

- WD WASHER-DRYER
- W/D WASHER AND DRYER
- F FRIDGE
- DB DISTRIBUTION BOX

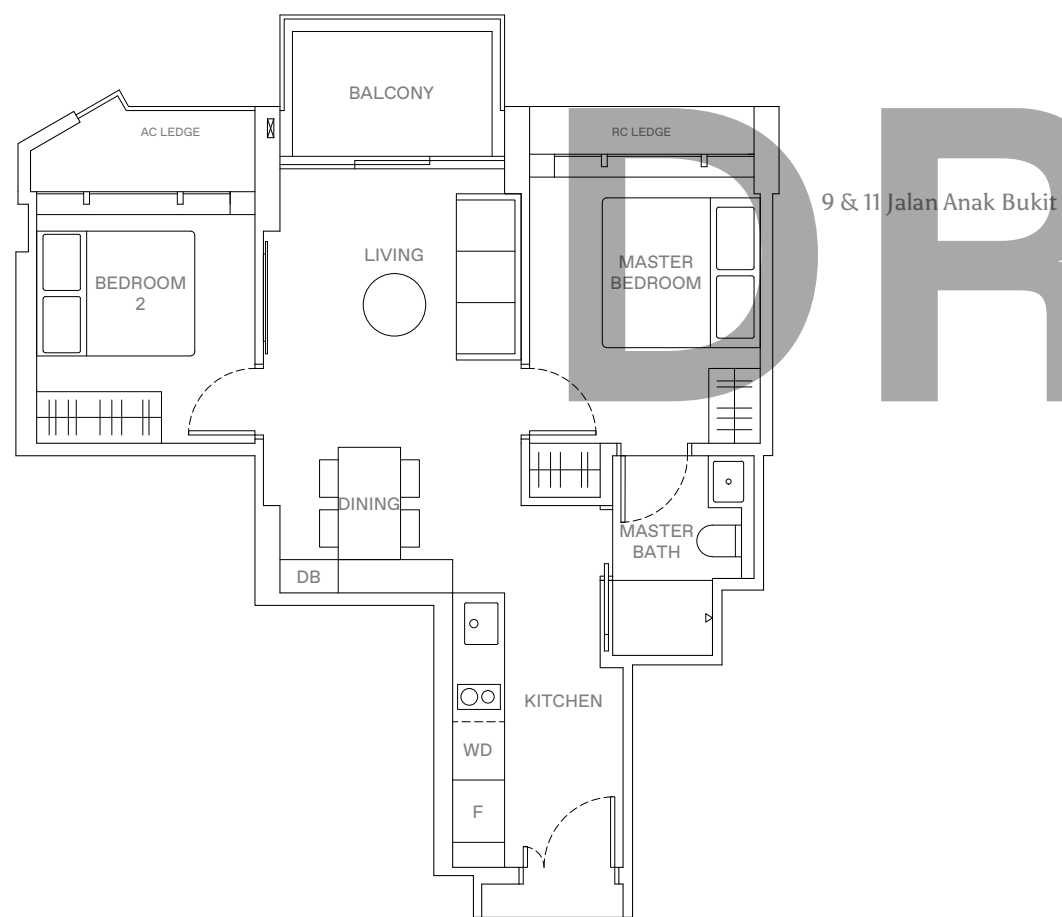
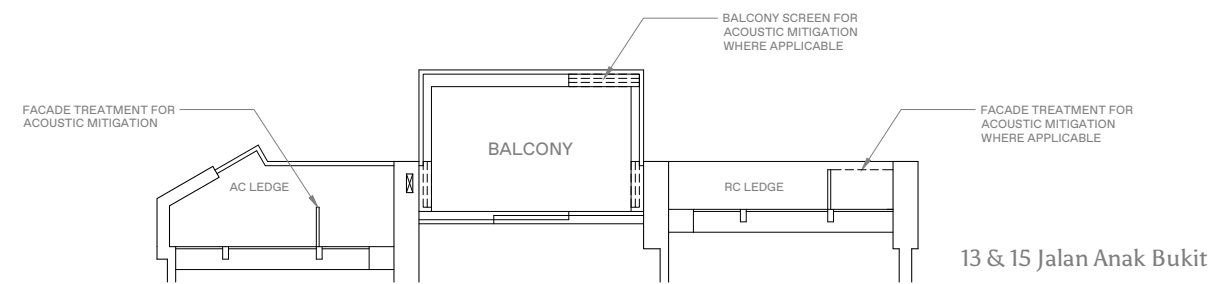


AREA INCLUDES AIR-CON (A/C) LEDGE, BALCONY AND STRATA VOID AREA WHERE APPLICABLE. THE PLANS ARE SUBJECT TO CHANGE AS MAY BE APPROVED BY RELEVANT AUTHORITIES. ALL FLOOR PLANS ARE APPROXIMATE MEASUREMENTS ONLY AND ARE SUBJECT TO GOVERNMENT RE-SURVEY. THE BALCONY SHALL NOT BE ENCLOSED UNLESS WITH THE APPROVED BALCONY SCREEN. FOR AN ILLUSTRATION OF THE APPROVED BALCONY SCREEN, PLEASE REFER TO THE DIAGRAM ANNEXED HERETO AS "ANNEXURE A".



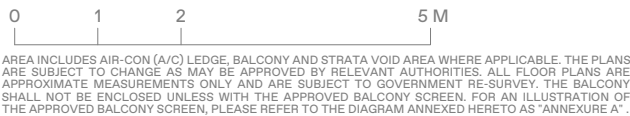
2 - BEDROOM . TYPE B3  
57 sqm | 614 sqft

9 Jalan Anak Bukit: #05-87 to #16-87 (Mirrored)  
11 Jalan Anak Bukit: #05-94 to #16-94  
13 Jalan Anak Bukit: #06-107 to #16-107  
15 Jalan Anak Bukit: #06-110 to #16-110 (Mirrored)



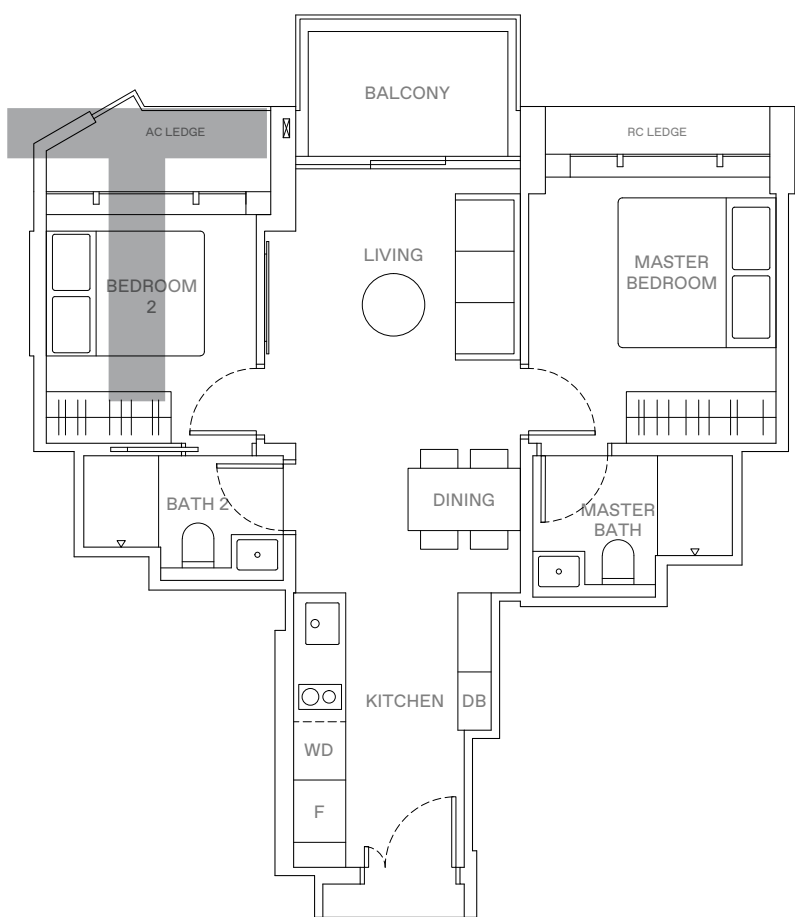
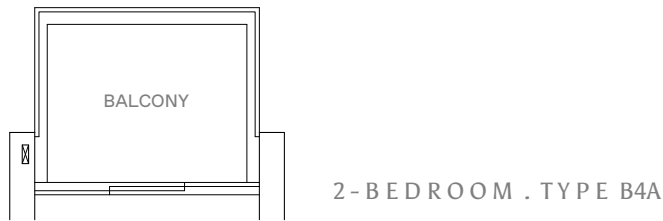
LEGEND

WD WASHER-DRYER  
W/D WASHER AND DRYER  
F FRIDGE  
DB DISTRIBUTION BOX



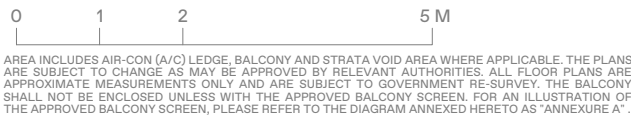
2 - BEDROOM . TYPE B4/B4A  
60 sqm | 646 sqft (B4), 61 sqm | 657 sqft (B4A)

13 Jalan Anak Bukit: #06-103 to #16-103 (B4)  
#18-103 to #31-103 (B4A)



LEGEND

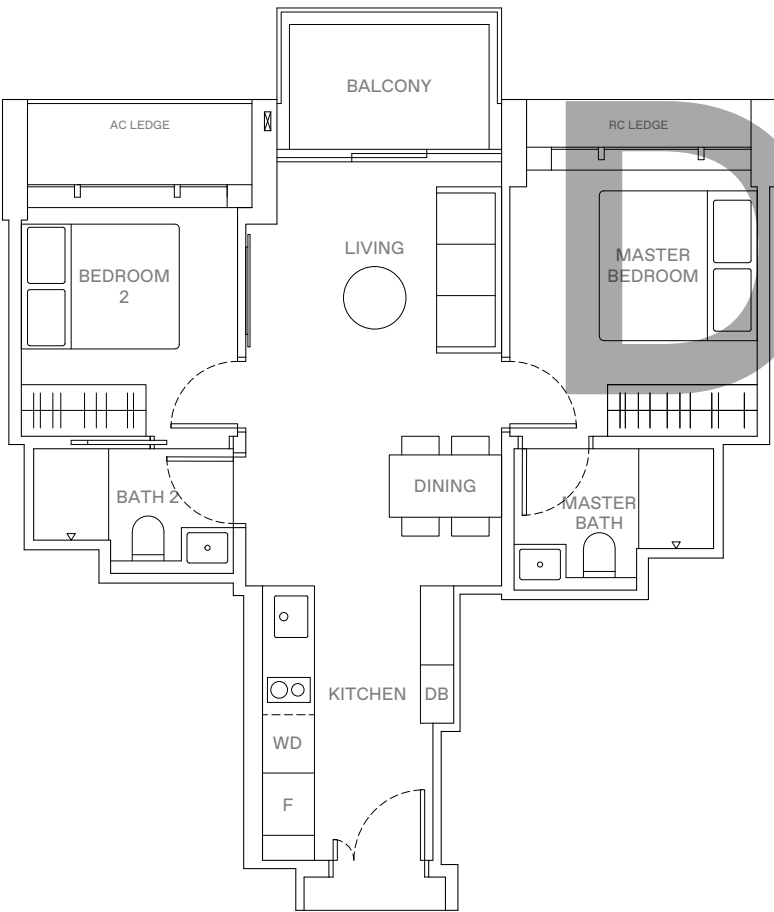
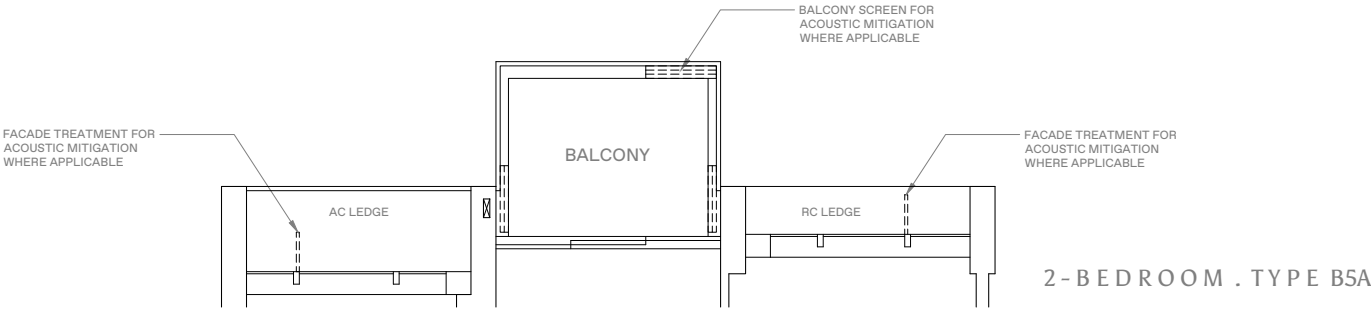
WD WASHER-DRYER  
W/D WASHER AND DRYER  
F FRIDGE  
DB DISTRIBUTION BOX





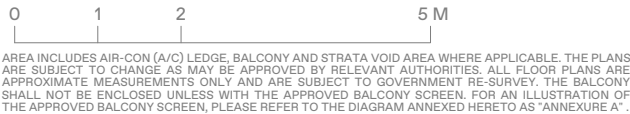
2 - BEDROOM . TYPE B5/B5A  
61 sqm | 657 sqft (B5), 62 sqm | 667 sqft (B5A)

13 Jalan Anak Bukit: #06-104 to #16-104 (B5, Mirrored)  
#18-100 to #31-100 (B5A, Mirrored)  
#18-108 to #31-108 (B5A)  
15 Jalan Anak Bukit: #06-113 to #16-113 (B5)  
#06-114 to #16-114 (B5, Mirrored)  
#18-114 to #31-114 (B5A, Mirrored)



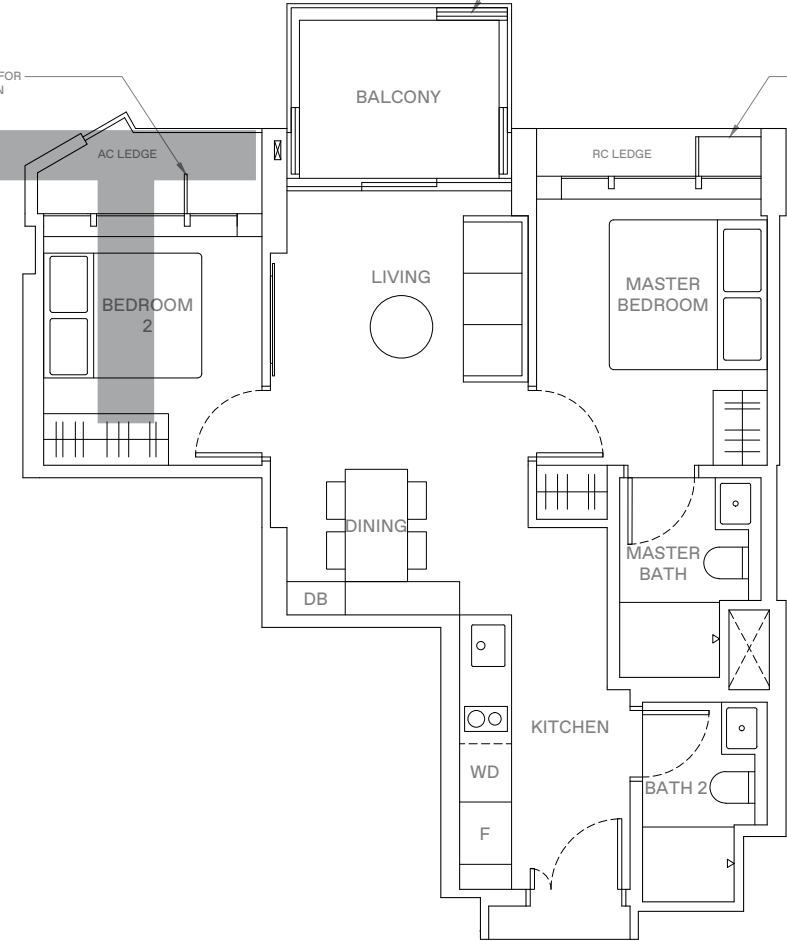
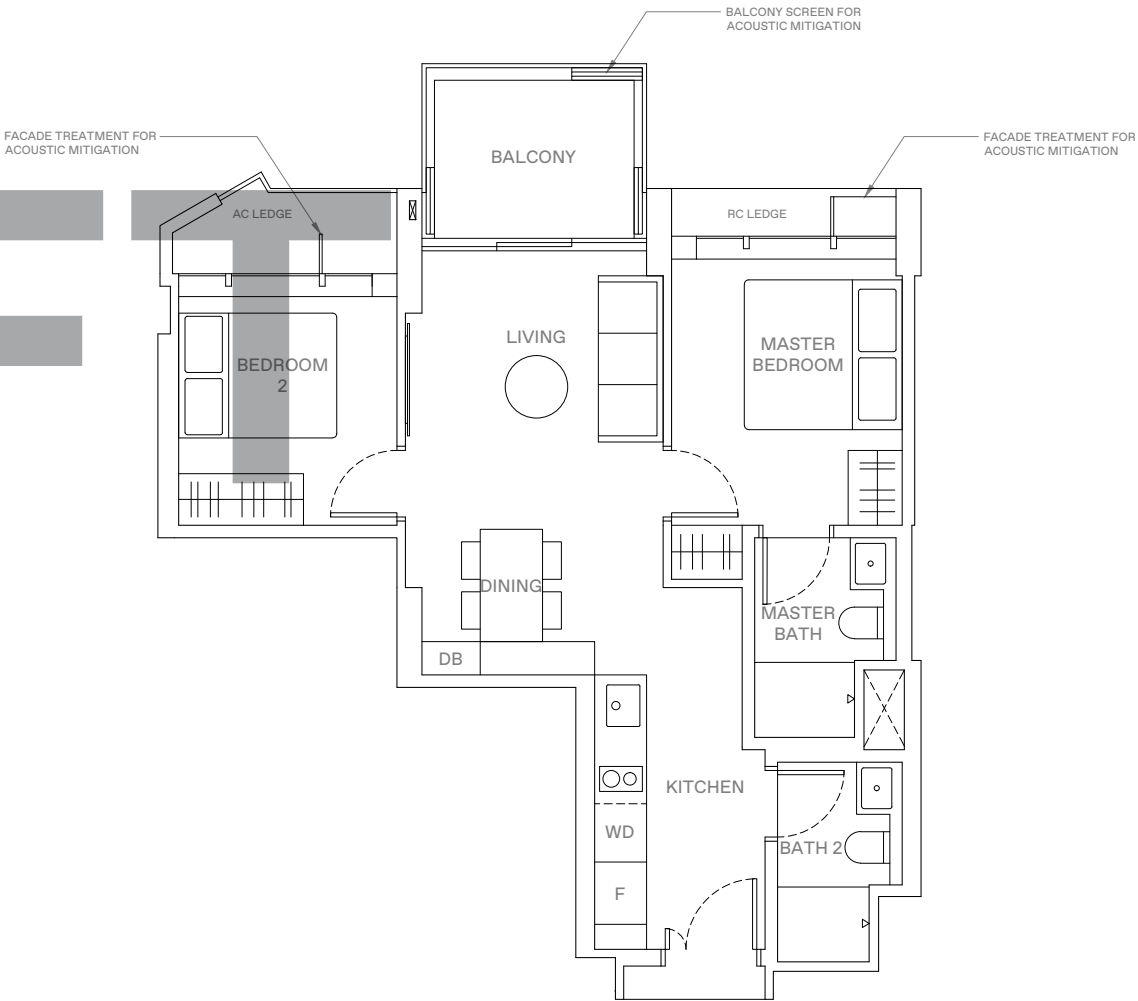
LEGEND

WD WASHER-DRYER  
W/D WASHER AND DRYER  
F FRIDGE  
DB DISTRIBUTION BOX



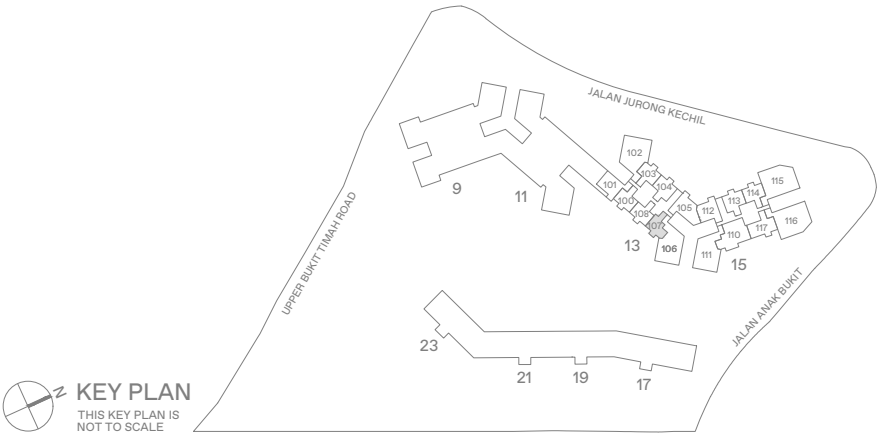
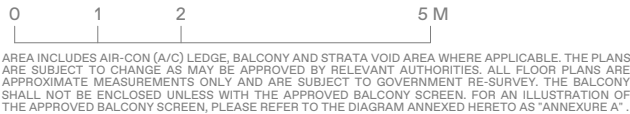
2 - BEDROOM . TYPE B6  
62 sqm | 667 sqft

13 Jalan Anak Bukit: #18-107 to #31-107



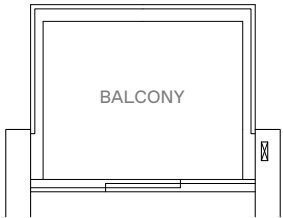
LEGEND

WD WASHER-DRYER  
W/D WASHER AND DRYER  
F FRIDGE  
DB DISTRIBUTION BOX

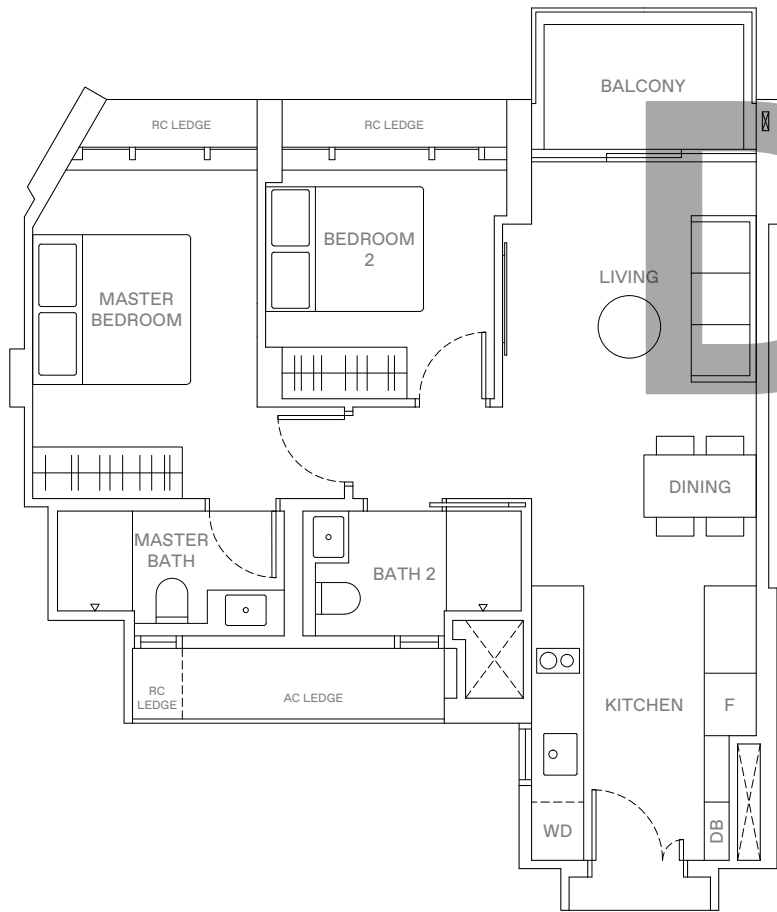


2 - BEDROOM . TYPE B7/B7A  
68 sqm | 732 sqft (B7), 69 sqm | 743 sqft (B7A)

9 Jalan Anak Bukit: #06-89 to #16-89 (B7)  
15 Jalan Anak Bukit: #06-112 to #16-112 (B7)  
#18-112 to #30-112 (B7A)



2 - BEDROOM . TYPE B7A



LEGEND

- WD WASHER-DRYER
- W/D WASHER AND DRYER
- F FRIDGE
- DB DISTRIBUTION BOX



AREA INCLUDES AIR-CON (A/C) LEDGE, BALCONY AND STRATA VOID AREA WHERE APPLICABLE. THE PLANS ARE SUBJECT TO CHANGE AS MAY BE APPROVED BY RELEVANT AUTHORITIES. ALL FLOOR PLANS ARE APPROXIMATE MEASUREMENTS ONLY AND ARE SUBJECT TO GOVERNMENT RE-SURVEY. THE BALCONY SHALL NOT BE ENCLOSED UNLESS WITH THE APPROVED BALCONY SCREEN. FOR AN ILLUSTRATION OF THE APPROVED BALCONY SCREEN, PLEASE REFER TO THE DIAGRAM ANNEXED HERETO AS "ANNEXURE A".



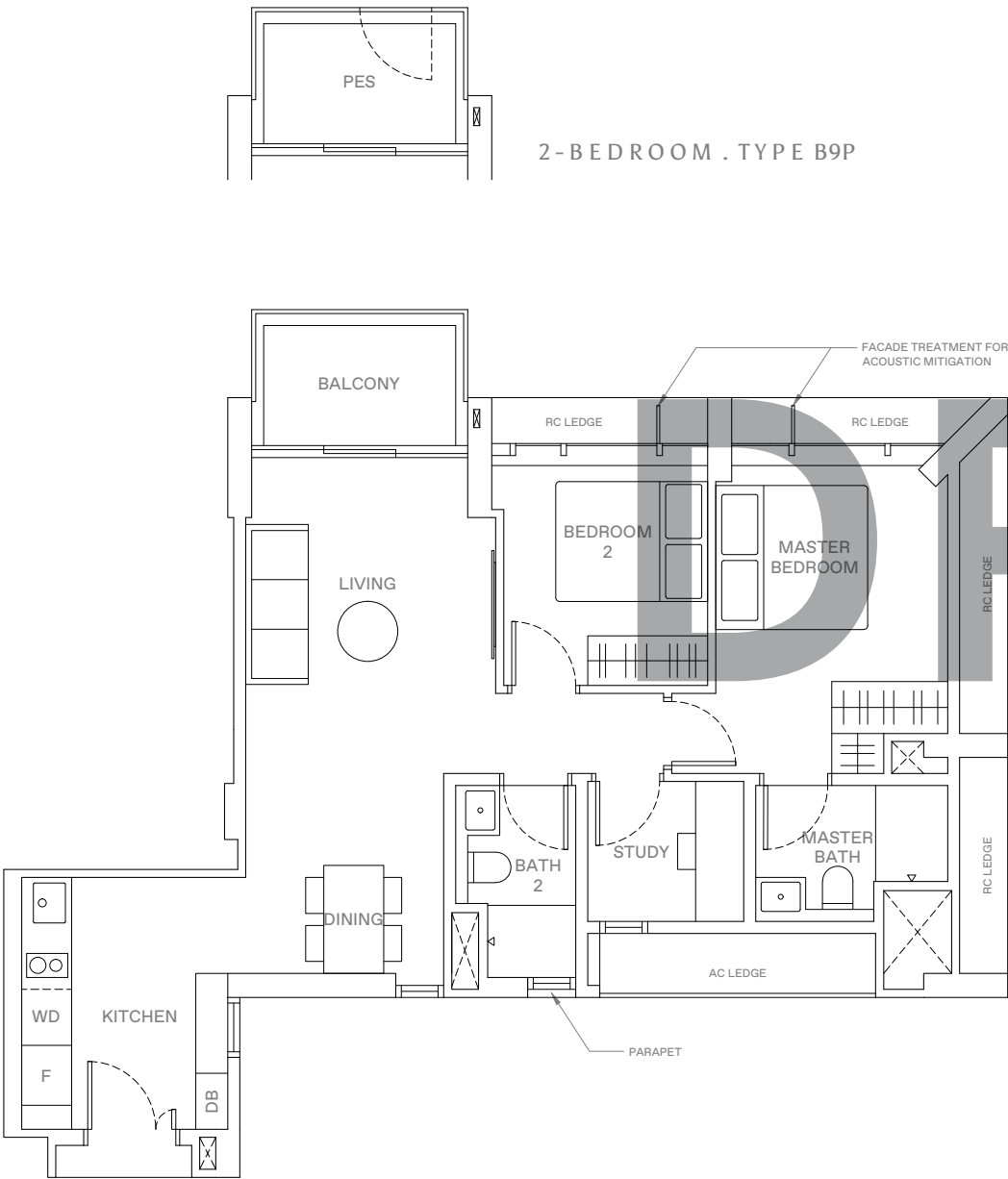
KEY PLAN  
THIS KEY PLAN IS NOT TO SCALE





2 - BEDROOM + STUDY . TYPE B9/B9P  
74 sqm | 797 sqft (B9, B9P)

13 Jalan Anak Bukit: #05-101 (B9P)  
#06-101 to #16-101 (B9)



LEGEND

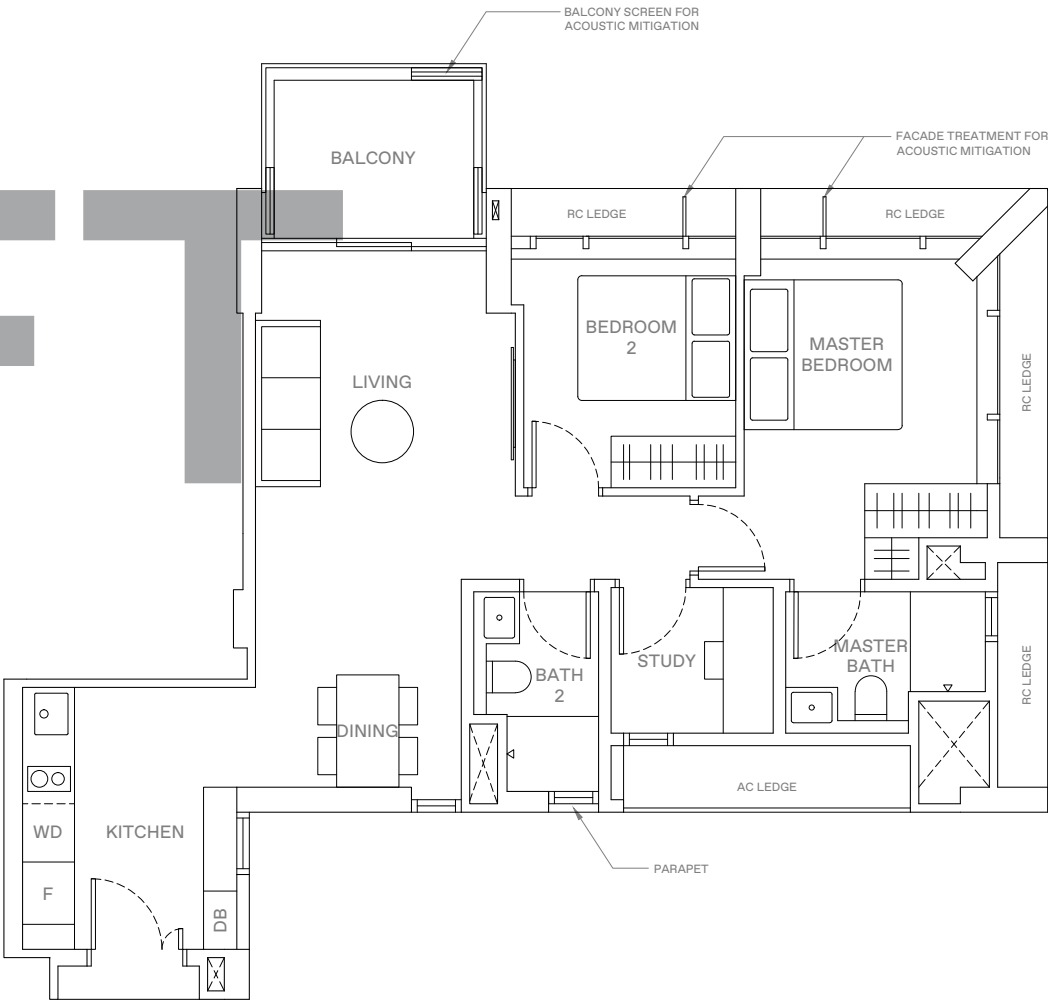
- WD WASHER-DRYER
- W/D WASHER AND DRYER
- F FRIDGE
- DB DISTRIBUTION BOX

0 1 2 5 M  
AREA INCLUDES AIR-CON (A/C) LEDGE, BALCONY AND STRATA VOID AREA WHERE APPLICABLE. THE PLANS ARE SUBJECT TO CHANGE AS MAY BE APPROVED BY RELEVANT AUTHORITIES. ALL FLOOR PLANS ARE APPROXIMATE MEASUREMENTS ONLY AND ARE SUBJECT TO GOVERNMENT RE-SURVEY. THE BALCONY SHALL NOT BE ENCLOSED UNLESS WITH THE APPROVED BALCONY SCREEN. FOR AN ILLUSTRATION OF THE APPROVED BALCONY SCREEN, PLEASE REFER TO THE DIAGRAM ANNEXED HERETO AS "ANNEXURE A".



2 - BEDROOM + STUDY . TYPE B9A  
75 sqm | 807 sqft

13 Jalan Anak Bukit: #18-101 to #31-101



LEGEND

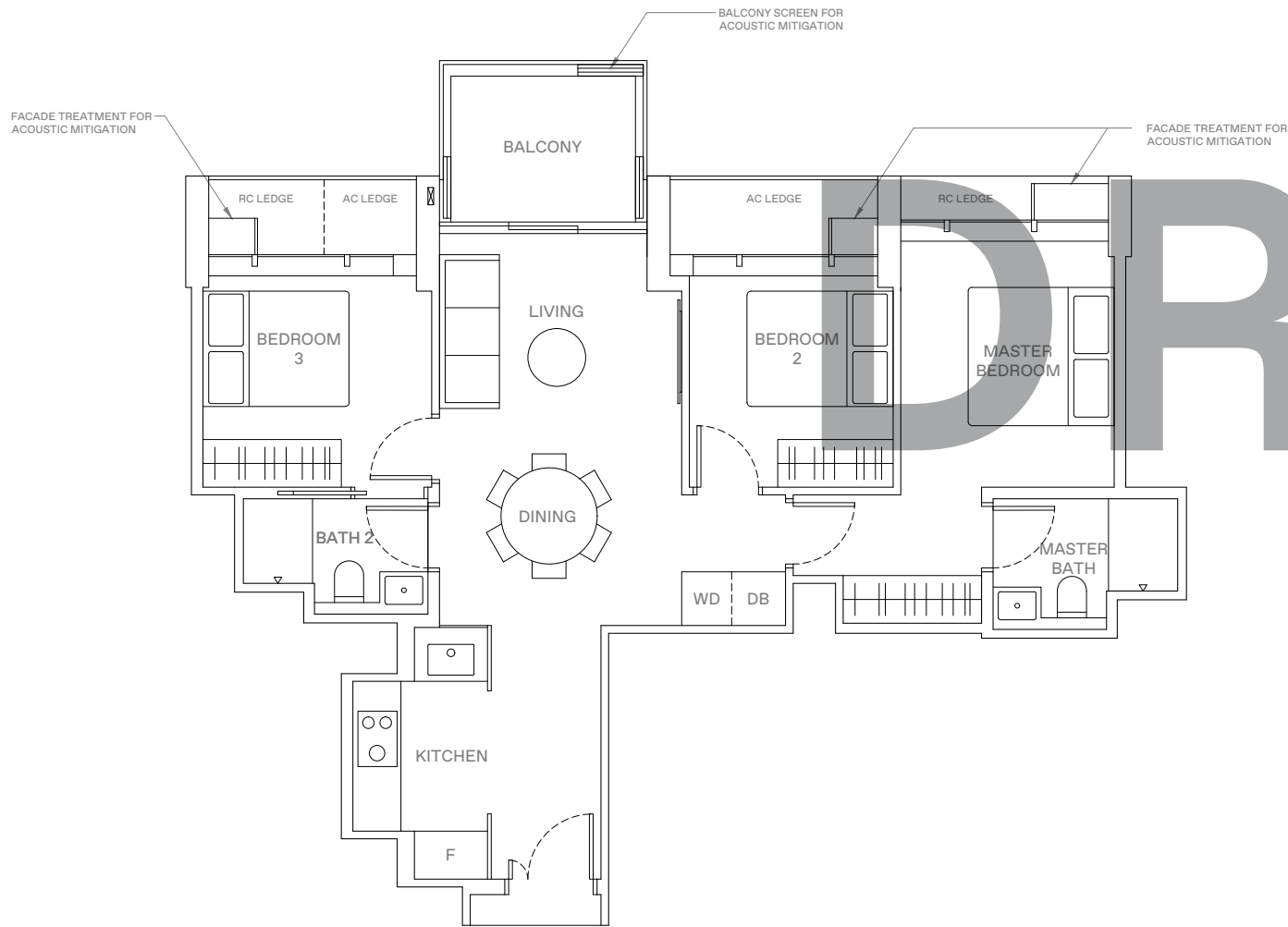
- WD WASHER-DRYER
- W/D WASHER AND DRYER
- F FRIDGE
- DB DISTRIBUTION BOX

0 1 2 5 M  
AREA INCLUDES AIR-CON (A/C) LEDGE, BALCONY AND STRATA VOID AREA WHERE APPLICABLE. THE PLANS ARE SUBJECT TO CHANGE AS MAY BE APPROVED BY RELEVANT AUTHORITIES. ALL FLOOR PLANS ARE APPROXIMATE MEASUREMENTS ONLY AND ARE SUBJECT TO GOVERNMENT RE-SURVEY. THE BALCONY SHALL NOT BE ENCLOSED UNLESS WITH THE APPROVED BALCONY SCREEN. FOR AN ILLUSTRATION OF THE APPROVED BALCONY SCREEN, PLEASE REFER TO THE DIAGRAM ANNEXED HERETO AS "ANNEXURE A".

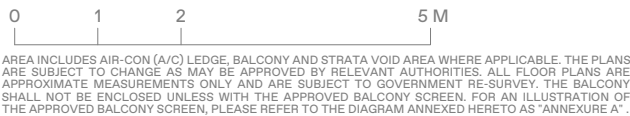


3-BEDROOM . TYPE C1  
82 sqm | 883 sqft

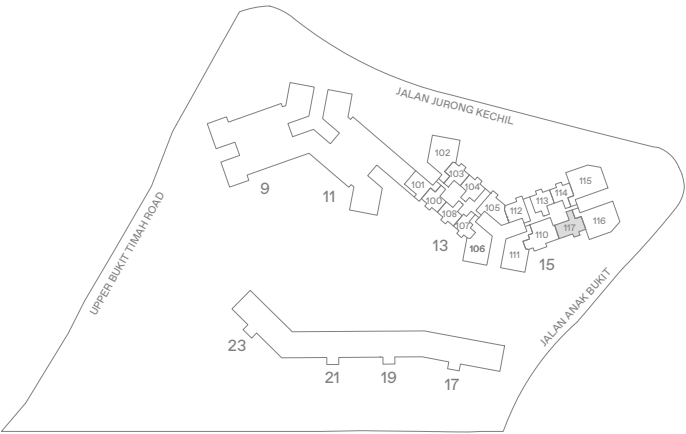
15 Jalan Anak Bukit: #18-117 to #31-117



- LEGEND
- WD WASHER-DRYER
  - W/D WASHER AND DRYER
  - F FRIDGE
  - DB DISTRIBUTION BOX

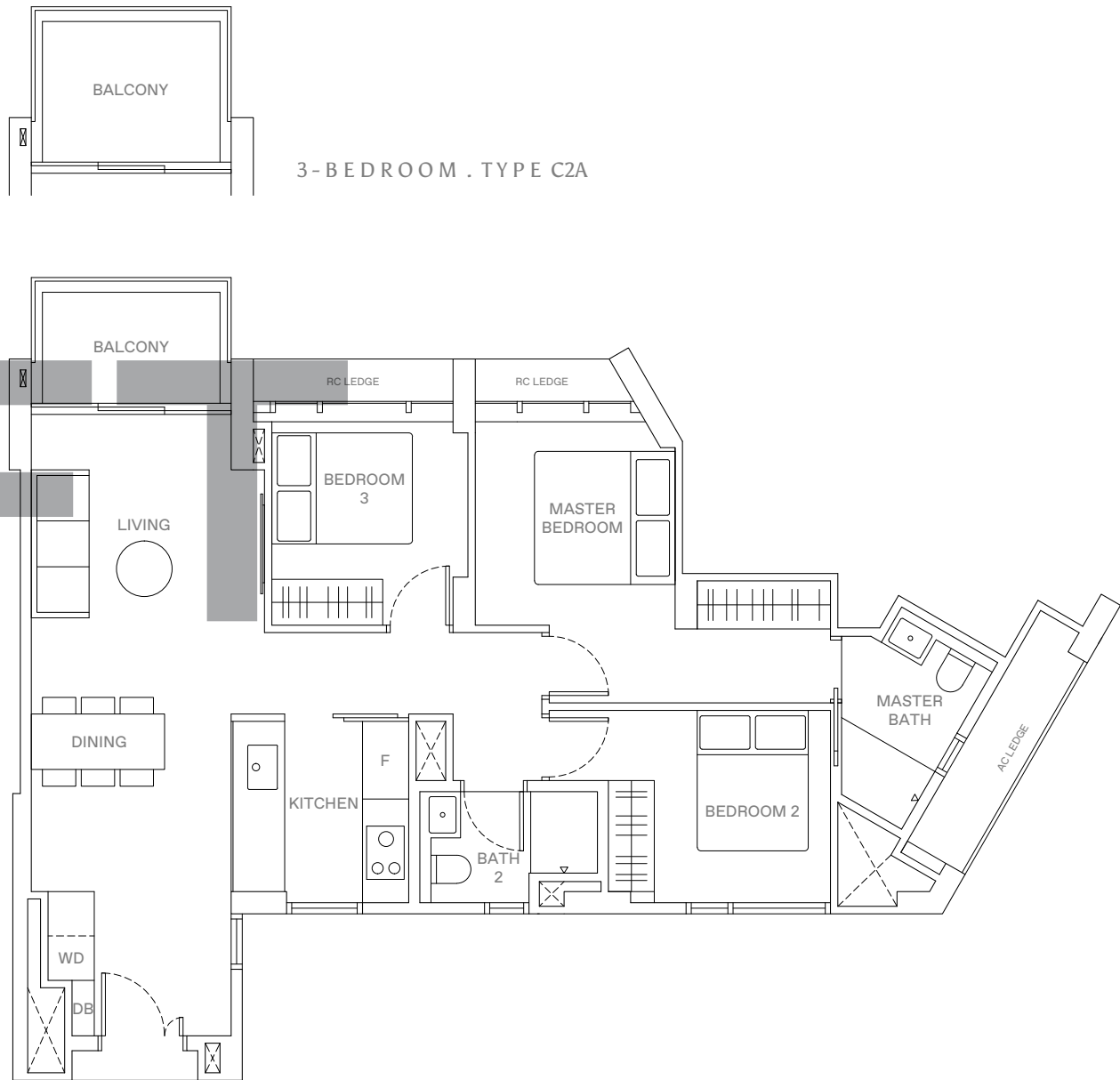


KEY PLAN  
THIS KEY PLAN IS NOT TO SCALE

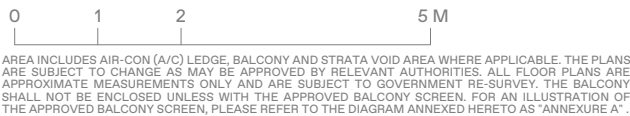


3-BEDROOM . TYPE C2/C2A  
87 sqm | 936 sqft (C2), 88 sqm | 947 sqft (C2A)

11 Jalan Anak Bukit: #06-92 to #16-92 (C2)  
13 Jalan Anak Bukit: #06-105 to #16-105 (C2)  
#18-105 to #30-105 (C2A)



- LEGEND
- WD WASHER-DRYER
  - W/D WASHER AND DRYER
  - F FRIDGE
  - DB DISTRIBUTION BOX



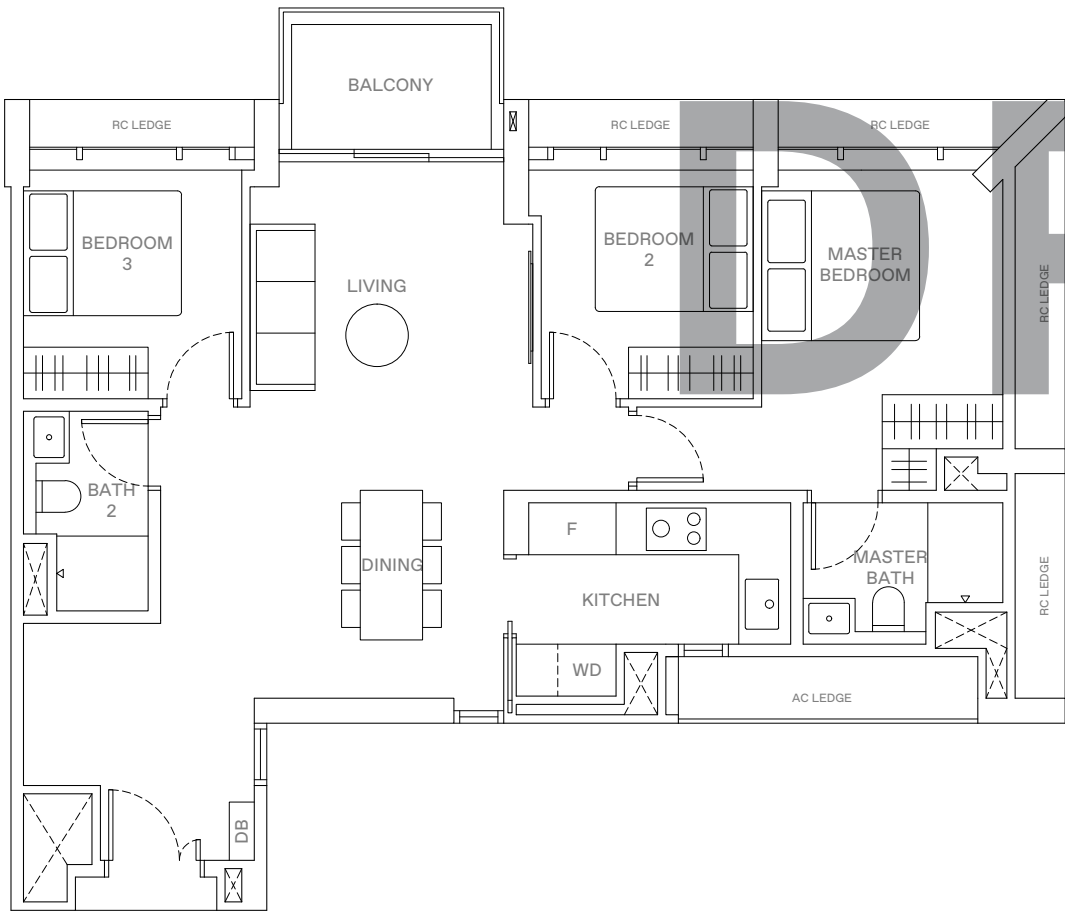
KEY PLAN  
THIS KEY PLAN IS NOT TO SCALE





3 - BEDROOM . TYPE C3  
89 sqm | 958 sqft

11 Jalan Anak Bukit: #06-97 to #16-97



- LEGEND
- WD WASHER-DRYER
  - W/D WASHER AND DRYER
  - F FRIDGE
  - DB DISTRIBUTION BOX

0 1 2 5 M

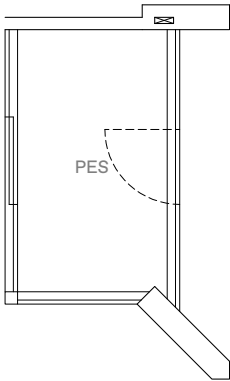
AREA INCLUDES AIR-CON (A/C) LEDGE, BALCONY AND STRATA VOID AREA WHERE APPLICABLE. THE PLANS ARE SUBJECT TO CHANGE AS MAY BE APPROVED BY RELEVANT AUTHORITIES. ALL FLOOR PLANS ARE APPROXIMATE MEASUREMENTS ONLY AND ARE SUBJECT TO GOVERNMENT RE-SURVEY. THE BALCONY SHALL NOT BE ENCLOSED UNLESS WITH THE APPROVED BALCONY SCREEN. FOR AN ILLUSTRATION OF THE APPROVED BALCONY SCREEN, PLEASE REFER TO THE DIAGRAM ANNEXED HERETO AS "ANNEXURE A".

KEY PLAN  
THIS KEY PLAN IS NOT TO SCALE



3 - BEDROOM . TYPE C4/C4P  
97 sqm | 1,044 sqft (C4, C4P)

9 Jalan Anak Bukit: #05-82 (C4P)  
#06-82 to #16-82 (C4)  
#05-83 to #16-83 (C4, Mirrored)



3-BEDROOM . TYPE C4P

- LEGEND
- WD WASHER-DRYER
  - W/D WASHER AND DRYER
  - F FRIDGE
  - DB DISTRIBUTION BOX

0 1 2 5 M

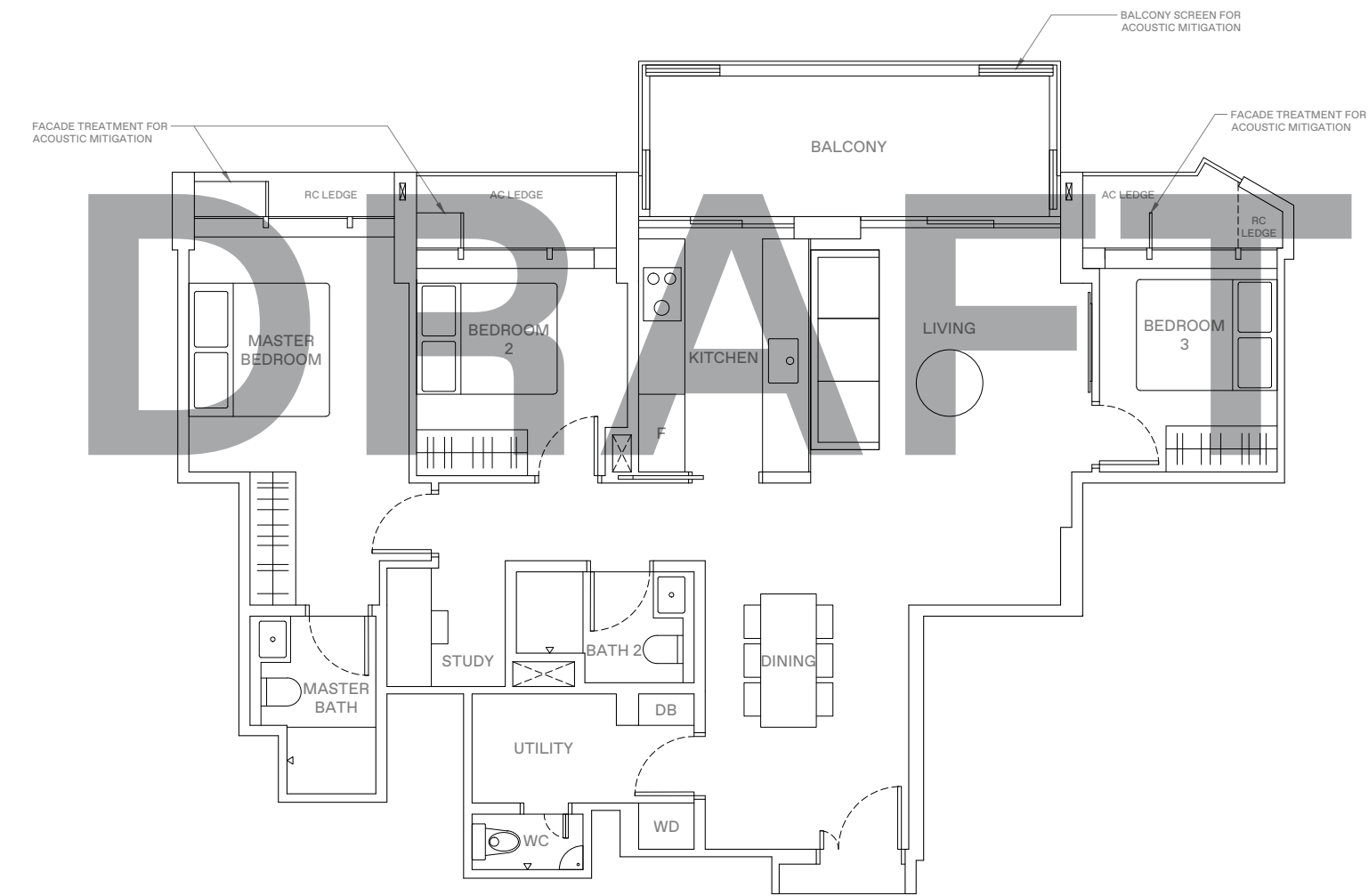
AREA INCLUDES AIR-CON (A/C) LEDGE, BALCONY AND STRATA VOID AREA WHERE APPLICABLE. THE PLANS ARE SUBJECT TO CHANGE AS MAY BE APPROVED BY RELEVANT AUTHORITIES. ALL FLOOR PLANS ARE APPROXIMATE MEASUREMENTS ONLY AND ARE SUBJECT TO GOVERNMENT RE-SURVEY. THE BALCONY SHALL NOT BE ENCLOSED UNLESS WITH THE APPROVED BALCONY SCREEN. FOR AN ILLUSTRATION OF THE APPROVED BALCONY SCREEN, PLEASE REFER TO THE DIAGRAM ANNEXED HERETO AS "ANNEXURE A".

KEY PLAN  
THIS KEY PLAN IS NOT TO SCALE



3 - BEDROOM + STUDY . TYPE C5  
113 sqm | 1,216 sqft

15 Jalan Anak Bukit: #18-110 to #31-110



LEGEND

- WD WASHER-DRYER
- W/D WASHER AND DRYER
- F FRIDGE
- DB DISTRIBUTION BOX

0 1 2 5 M  
AREA INCLUDES AIR-CON (A/C) LEDGE, BALCONY AND STRATA VOID AREA WHERE APPLICABLE. THE PLANS ARE SUBJECT TO CHANGE AS MAY BE APPROVED BY RELEVANT AUTHORITIES. ALL FLOOR PLANS ARE APPROXIMATE MEASUREMENTS ONLY AND ARE SUBJECT TO GOVERNMENT RE-SURVEY. THE BALCONY SHALL NOT BE ENCLOSED UNLESS WITH THE APPROVED BALCONY SCREEN. FOR AN ILLUSTRATION OF THE APPROVED BALCONY SCREEN, PLEASE REFER TO THE DIAGRAM ANNEXED HERETO AS "ANNEXURE A".

KEY PLAN  
THIS KEY PLAN IS NOT TO SCALE

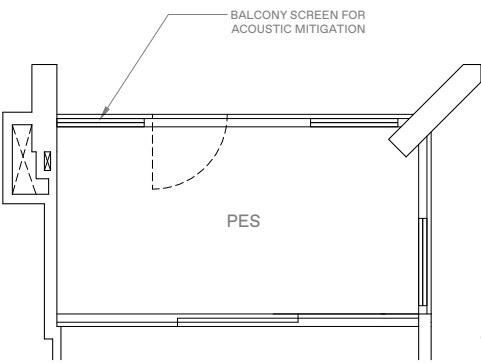
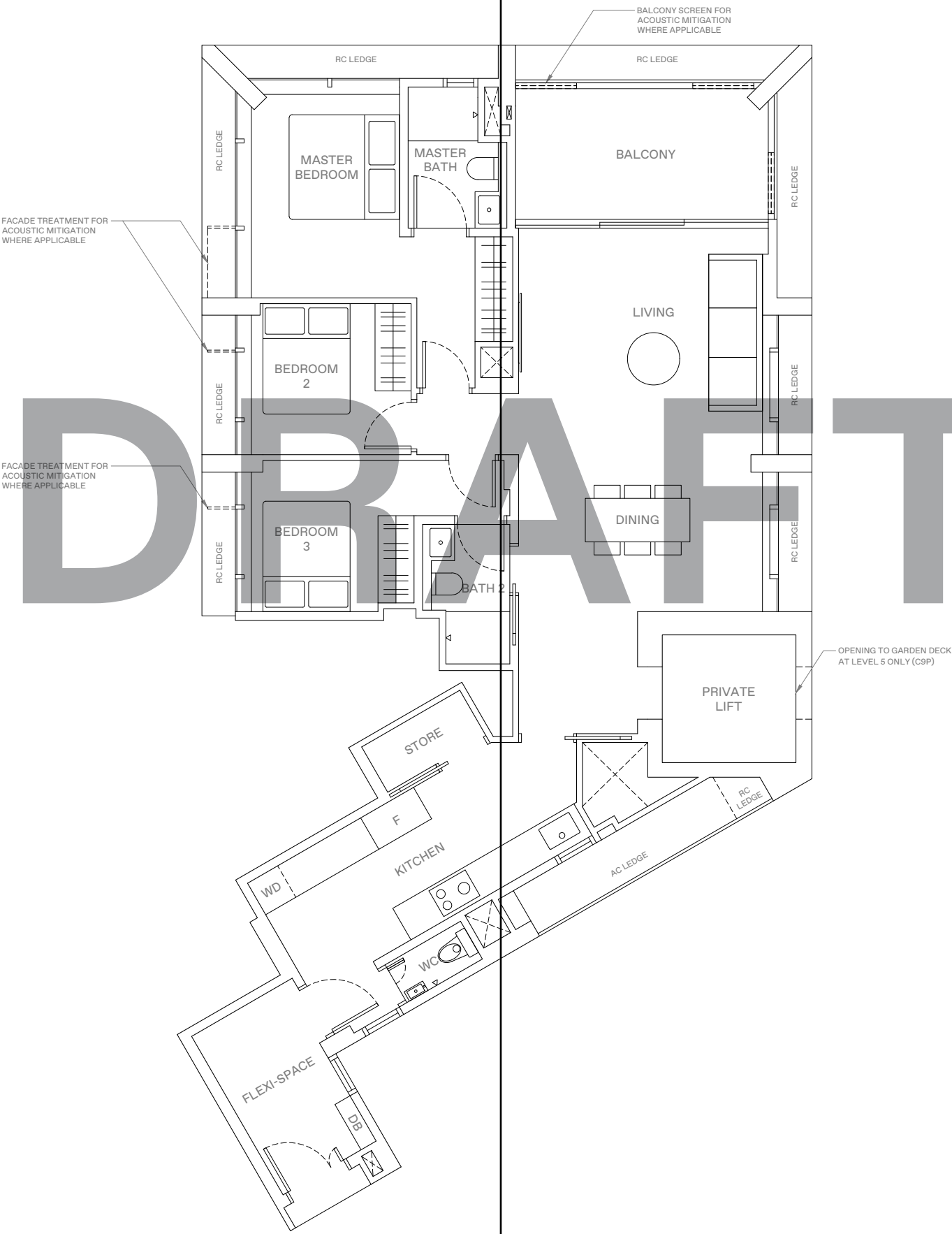


HORIZON  
FLOOR PLANS



3 - BEDROOM . TYPE C9/C9P  
122 sqm | 1,313 sqft (C9, C9P)

9 Jalan Anak Bukit: #05-88 to #16-88 (C9)  
15 Jalan Anak Bukit: #05-111 (C9P)  
#06-111 to #16-111, #18-111 to #31-111 (C9)



3 - BEDROOM . TYPE C9P

LEGEND

- WD WASHER-DRYER
- W/D WASHER AND DRYER
- F FRIDGE
- DB DISTRIBUTION BOX

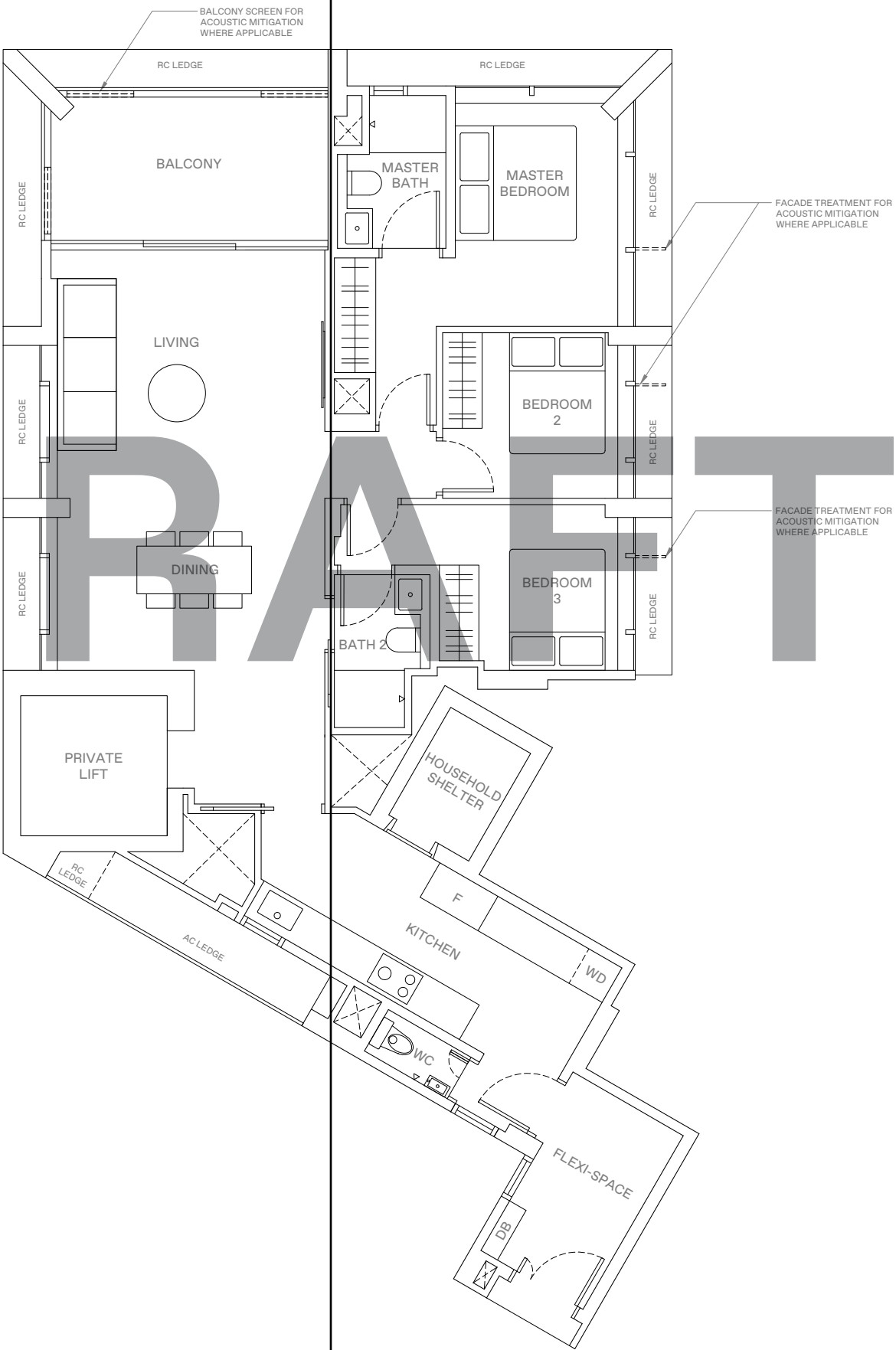
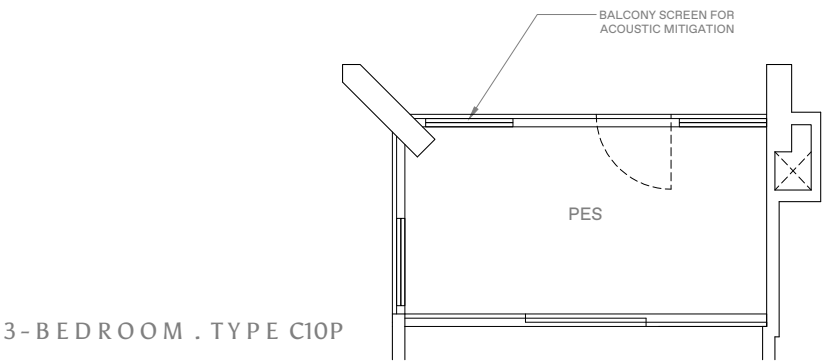


AREA INCLUDES AIR-CON (A/C) LEDGE, BALCONY AND STRATA VOID AREA WHERE APPLICABLE. THE PLANS ARE SUBJECT TO CHANGE AS MAY BE APPROVED BY RELEVANT AUTHORITIES. ALL FLOOR PLANS ARE APPROXIMATE MEASUREMENTS ONLY AND ARE SUBJECT TO GOVERNMENT RE-SURVEY. THE BALCONY SHALL NOT BE ENCLOSED UNLESS WITH THE APPROVED BALCONY SCREEN. FOR AN ILLUSTRATION OF THE APPROVED BALCONY SCREEN, PLEASE REFER TO THE DIAGRAM ANNEXED HERETO AS "ANNEXURE A".

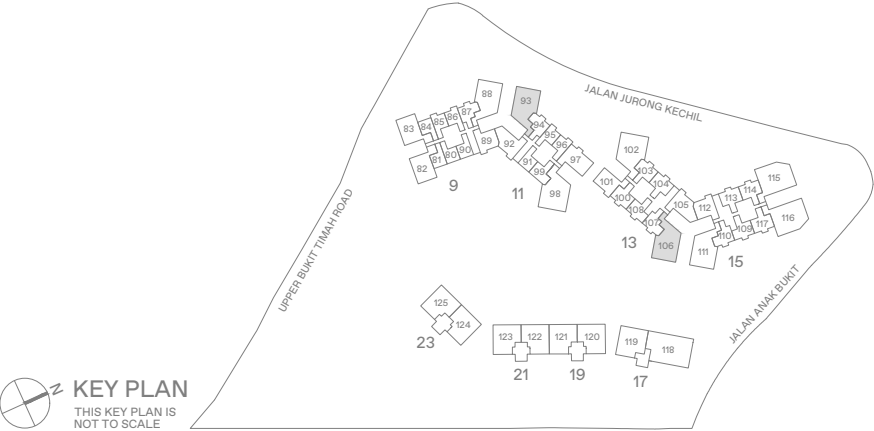
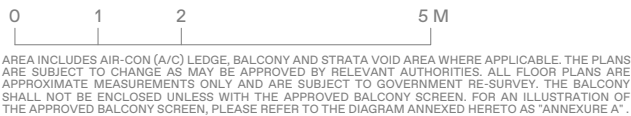


3 - BEDROOM . TYPE C10/C10P  
123 sqm | 1,324 sqft (C10, C10P)

11 Jalan Anak Bukit: #05-93 to #16-93 (C10)  
13 Jalan Anak Bukit: #05-106 (C10P)  
#06-106 to #16-106, #18-106 to #31-106 (C10)



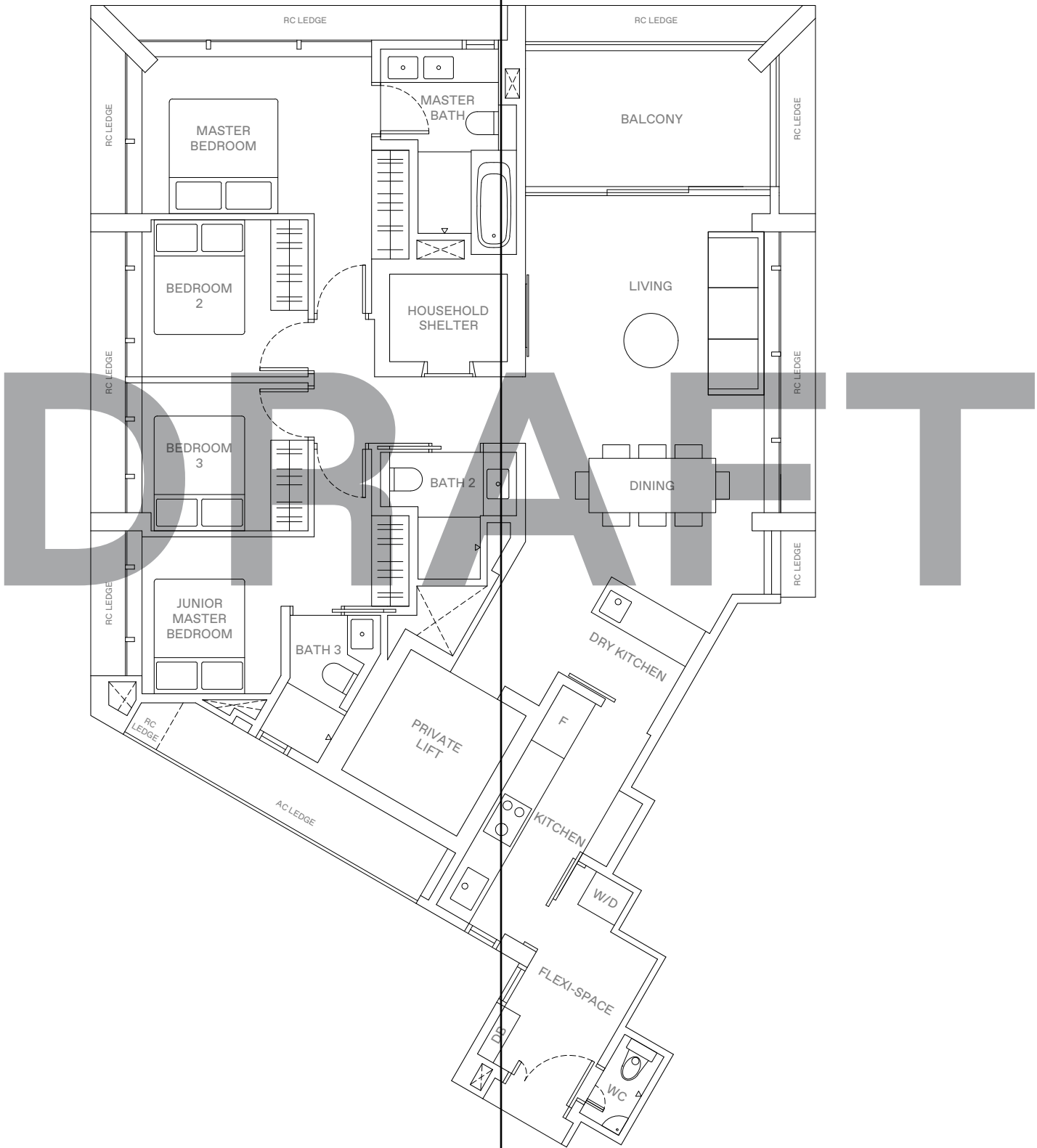
- LEGEND
- WD WASHER-DRYER
  - W/D WASHER AND DRYER
  - F FRIDGE
  - DB DISTRIBUTION BOX





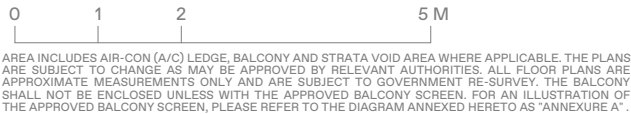
4 - BEDROOM . TYPE D2  
137 sqm | 1,475 sqft

11 Jalan Anak Bukit: #06-98 to #16-98  
13 Jalan Anak Bukit: #06-102 to #16-102, #18-102 to #31-102



LEGEND

WD	WASHER-DRYER
W/D	WASHER AND DRYER
F	FRIDGE
DB	DISTRIBUTION BOX

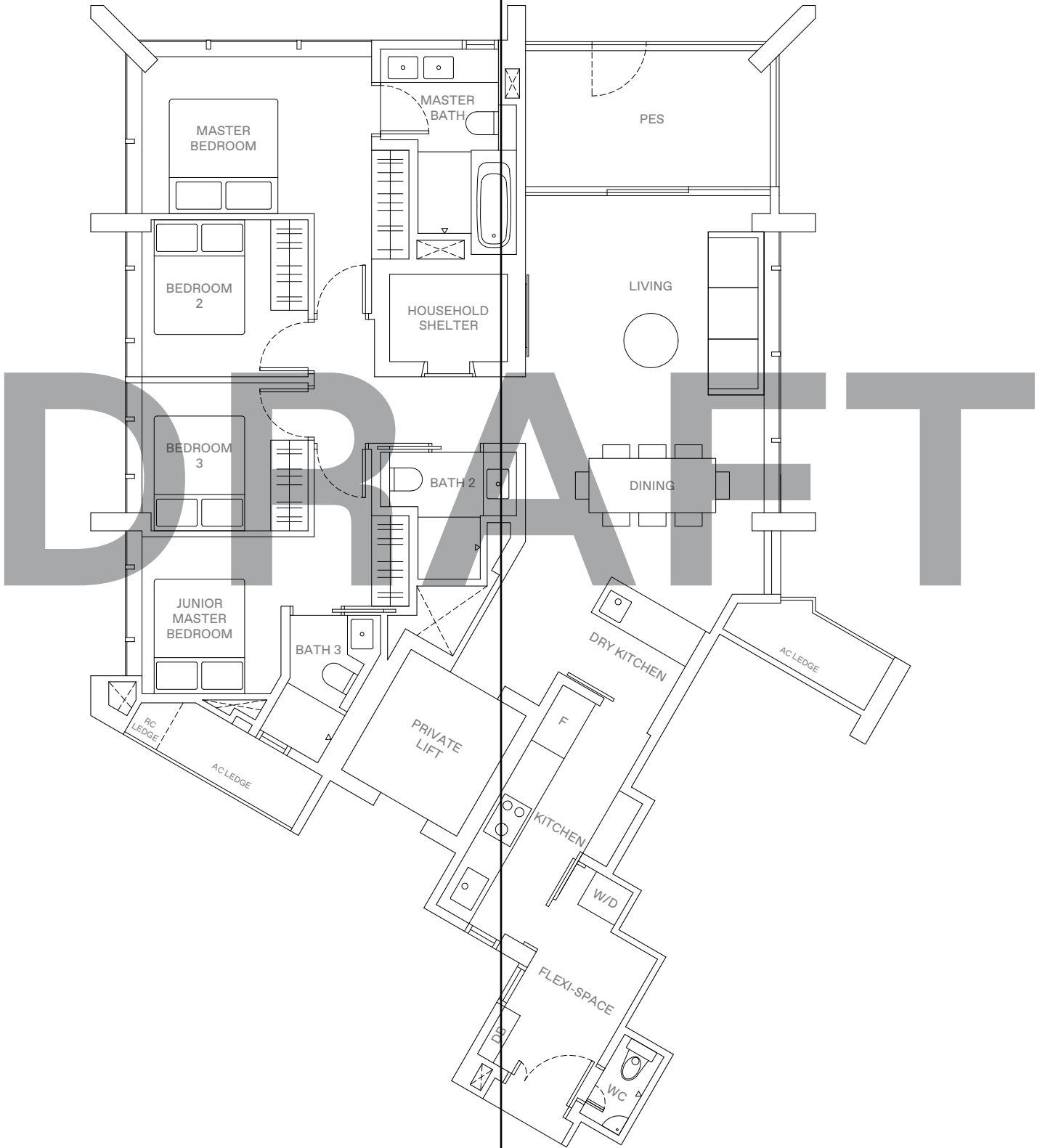


KEY PLAN  
THIS KEY PLAN IS NOT TO SCALE



4 - BEDROOM . TYPE D2P  
137 sqm | 1,475 sqft

11 Jalan Anak Bukit: #05-98

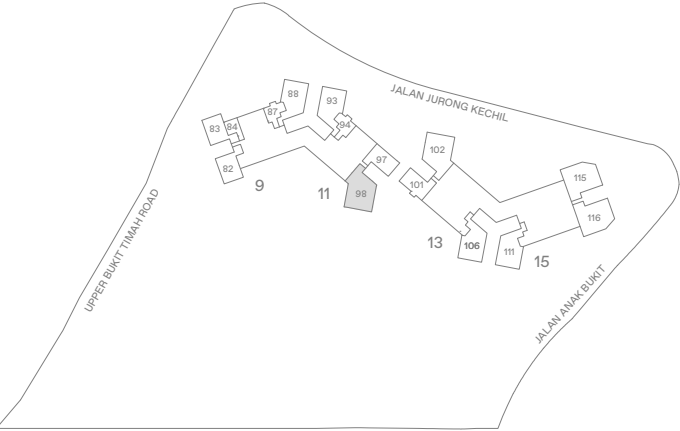


LEGEND

- WD WASHER-DRYER
- W/D WASHER AND DRYER
- F FRIDGE
- DB DISTRIBUTION BOX



AREA INCLUDES AIR-CON (A/C) LEDGE, BALCONY AND STRATA VOID AREA WHERE APPLICABLE. THE PLANS ARE SUBJECT TO CHANGE AS MAY BE APPROVED BY RELEVANT AUTHORITIES. ALL FLOOR PLANS ARE APPROXIMATE MEASUREMENTS ONLY AND ARE SUBJECT TO GOVERNMENT RE-SURVEY. THE BALCONY SHALL NOT BE ENCLOSED UNLESS WITH THE APPROVED BALCONY SCREEN. FOR AN ILLUSTRATION OF THE APPROVED BALCONY SCREEN, PLEASE REFER TO THE DIAGRAM ANNEXED HERETO AS "ANNEXURE A".

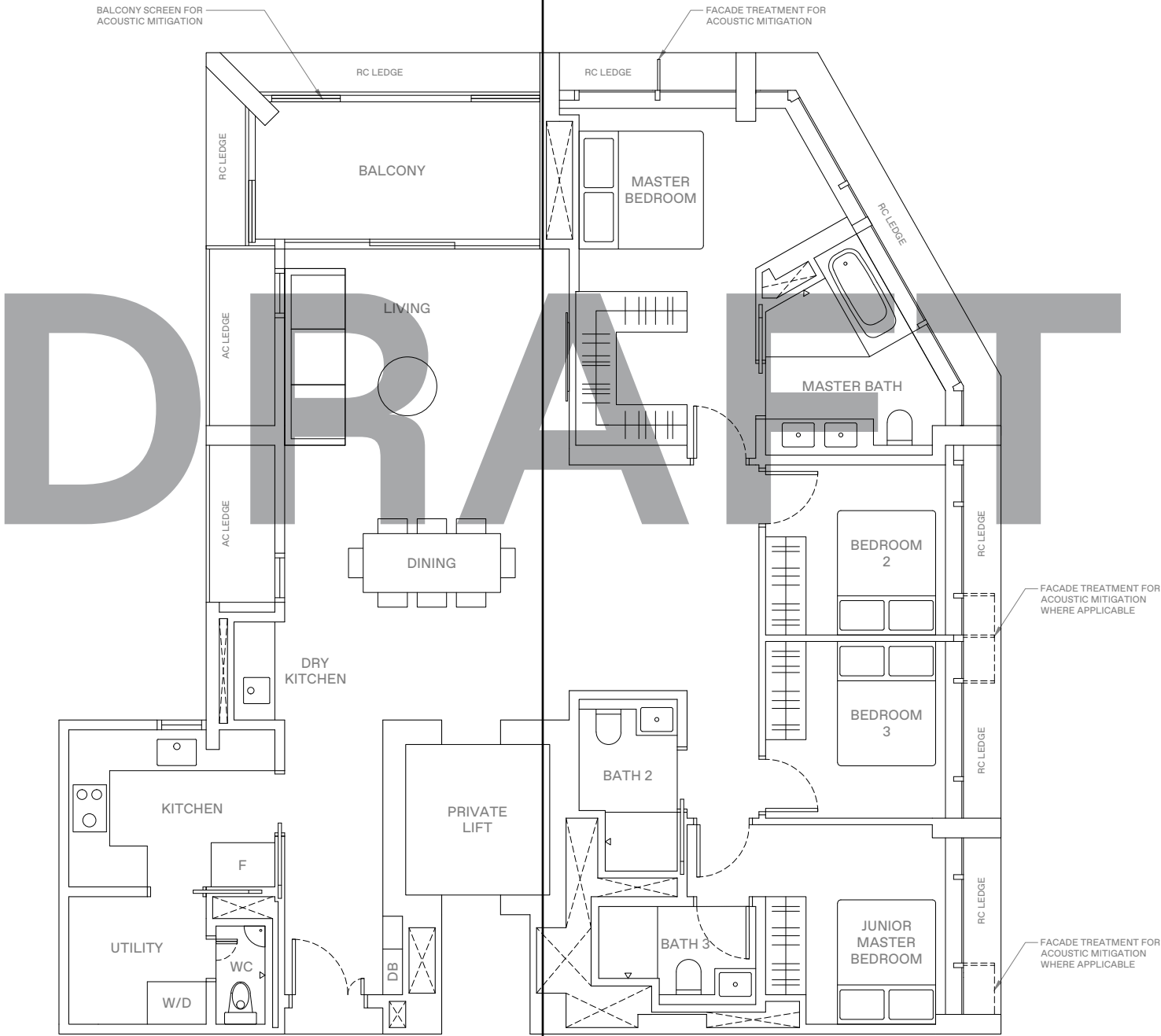


KEY PLAN  
THIS KEY PLAN IS NOT TO SCALE



4 - BEDROOM . TYPE D3  
151 sqm | 1,625 sqft

15 Jalan Anak Bukit: #05-115 (Mirrored)  
#05-116

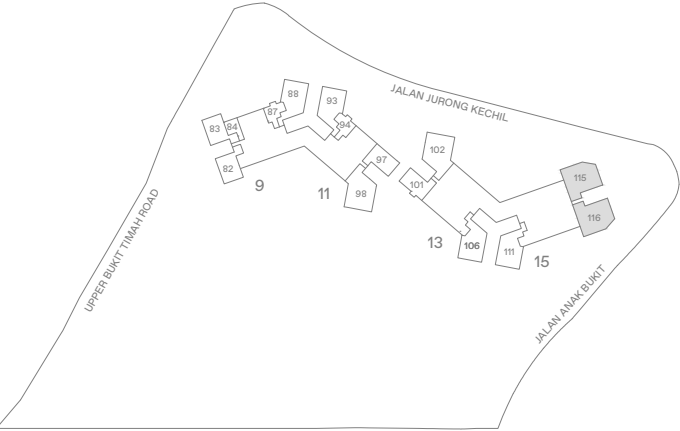


LEGEND

- WD WASHER-DRYER
- W/D WASHER AND DRYER
- F FRIDGE
- DB DISTRIBUTION BOX



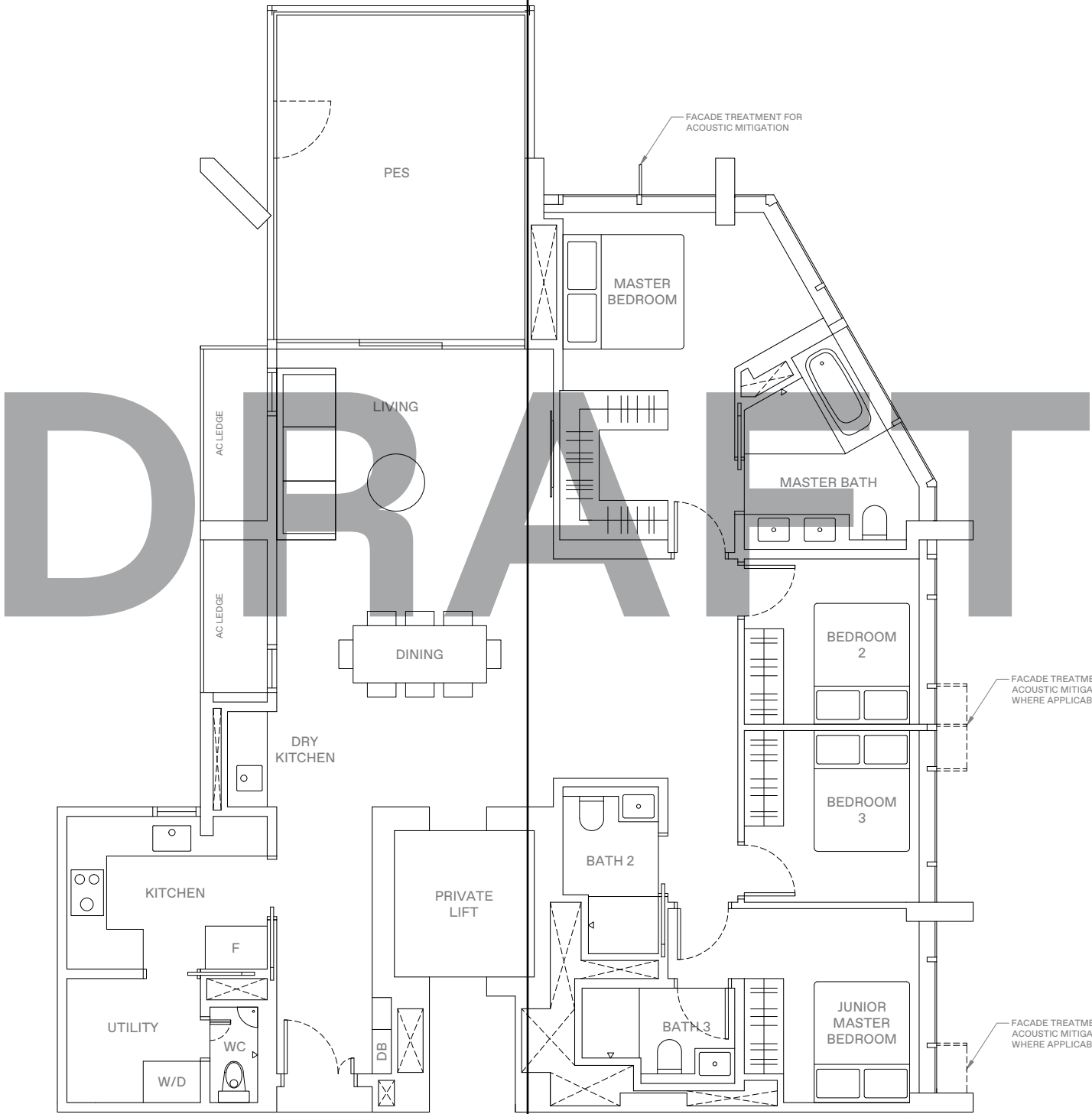
AREA INCLUDES AIR-CON (A/C) LEDGE, BALCONY AND STRATA VOID AREA WHERE APPLICABLE. THE PLANS ARE SUBJECT TO CHANGE AS MAY BE APPROVED BY RELEVANT AUTHORITIES. ALL FLOOR PLANS ARE APPROXIMATE MEASUREMENTS ONLY AND ARE SUBJECT TO GOVERNMENT RE-SURVEY. THE BALCONY SHALL NOT BE ENCLOSED UNLESS WITH THE APPROVED BALCONY SCREEN. FOR AN ILLUSTRATION OF THE APPROVED BALCONY SCREEN, PLEASE REFER TO THE DIAGRAM ANNEXED HERETO AS "ANNEXURE A".



KEY PLAN  
THIS KEY PLAN IS NOT TO SCALE

4 - BEDROOM . TYPE D3P  
162 sqm | 1,744 sqft

15 Jalan Anak Bukit: #04-115 (Mirrored)  
#04-116

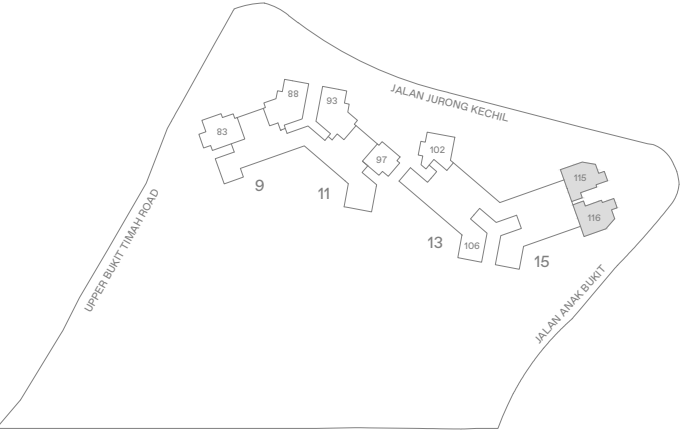


LEGEND

WD	WASHER-DRYER
W/D	WASHER AND DRYER
F	FRIDGE
DB	DISTRIBUTION BOX

0 1 2 5 M

AREA INCLUDES AIR-CON (A/C) LEDGE, BALCONY AND STRATA VOID AREA WHERE APPLICABLE. THE PLANS ARE SUBJECT TO CHANGE AS MAY BE APPROVED BY RELEVANT AUTHORITIES. ALL FLOOR PLANS ARE APPROXIMATE MEASUREMENTS ONLY AND ARE SUBJECT TO GOVERNMENT RE-SURVEY. THE BALCONY SHALL NOT BE ENCLOSED UNLESS WITH THE APPROVED BALCONY SCREEN. FOR AN ILLUSTRATION OF THE APPROVED BALCONY SCREEN, PLEASE REFER TO THE DIAGRAM ANNEXED HERETO AS "ANNEXURE A".



KEY PLAN  
THIS KEY PLAN IS NOT TO SCALE



4 - BEDROOM . TYPE D4

151 sqm | 1,625 sqft

15 Jalan Anak Bukit: #06-115 to #16-115, #18-115 to #31-115 (Mirrored)

#06-116 to #16-116, #18-116 to #31-116

- LEGEND
- WD

W/D

F

DB

WASHER-DRYER

WASHER AND DRYER

FRIDGE

DISTRIBUTION BOX

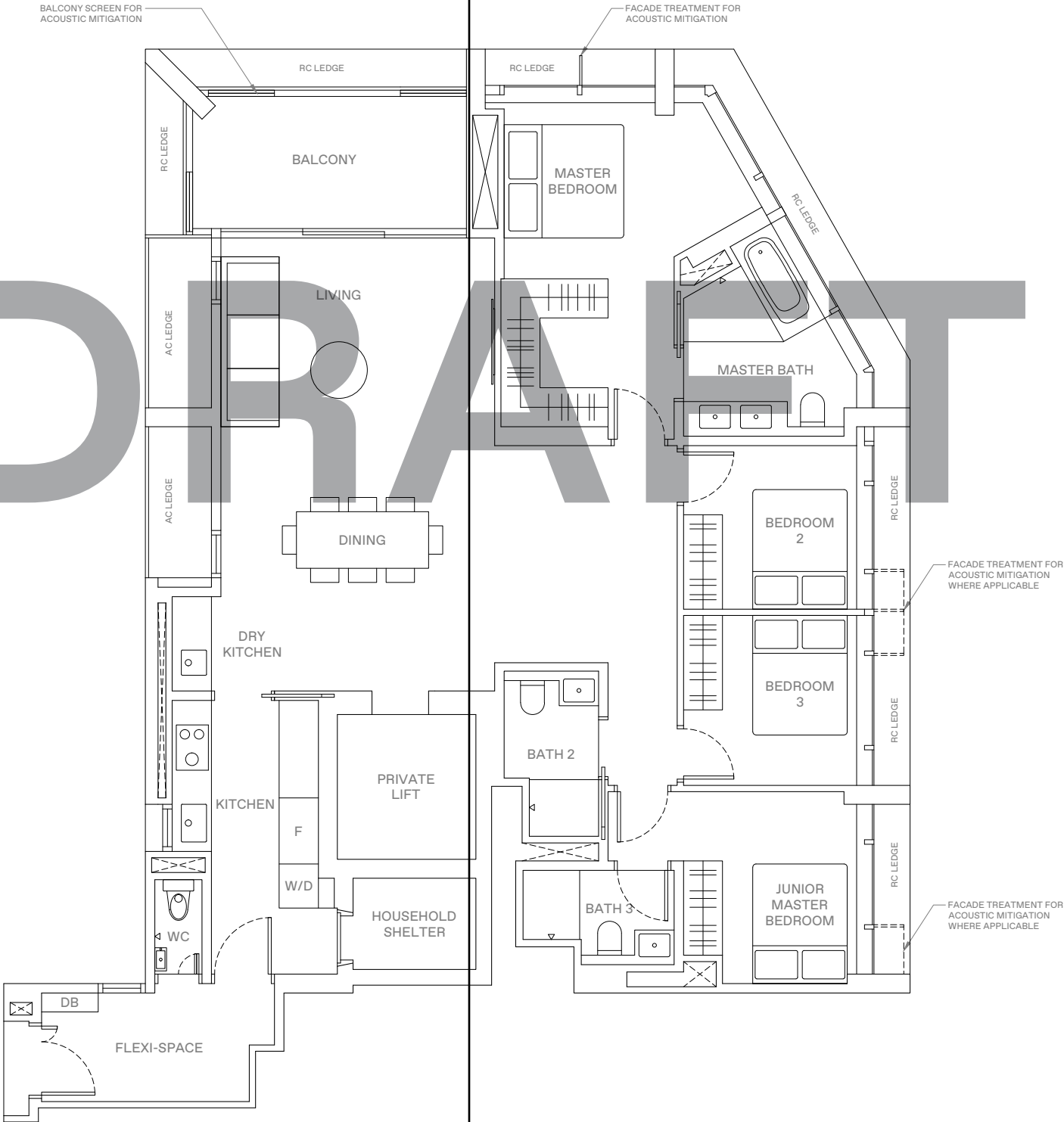
0

1

2

5 M

AREA INCLUDES AIR-CON (A/C) LEDGE, BALCONY AND STRATA VOID AREA WHERE APPLICABLE. THE PLANS ARE SUBJECT TO CHANGE AS MAY BE APPROVED BY RELEVANT AUTHORITIES. ALL FLOOR PLANS ARE APPROXIMATE MEASUREMENTS ONLY AND ARE SUBJECT TO GOVERNMENT RE-SURVEY. THE BALCONY SHALL NOT BE ENCLOSED UNLESS WITH THE APPROVED BALCONY SCREEN. FOR AN ILLUSTRATION OF THE APPROVED BALCONY SCREEN, PLEASE REFER TO THE DIAGRAM ANNEXED HERETO AS "ANNEXURE A".

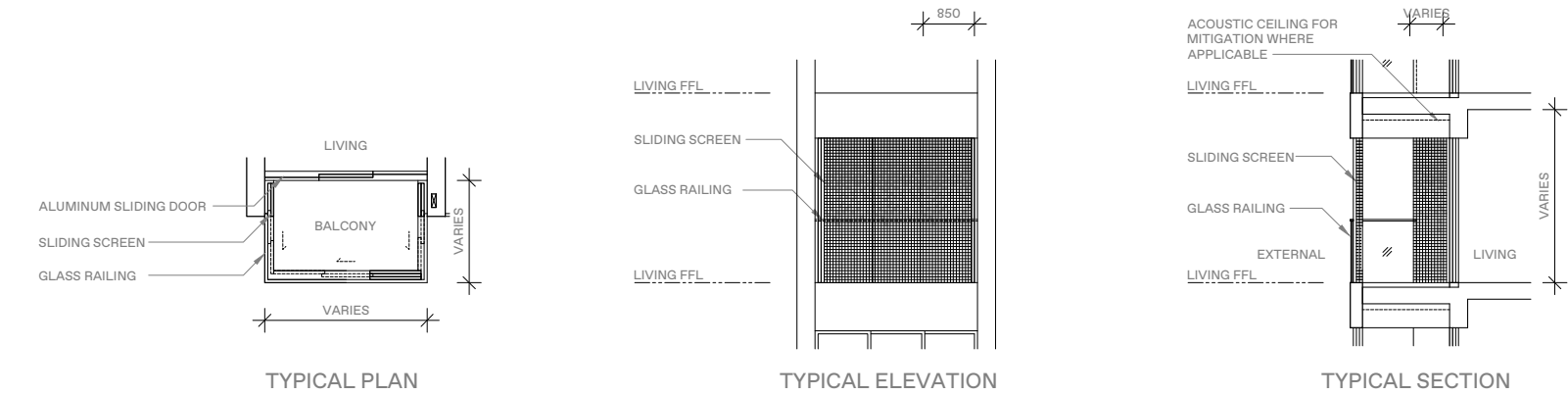


ANNEXURE A

BALCONY SCREEN

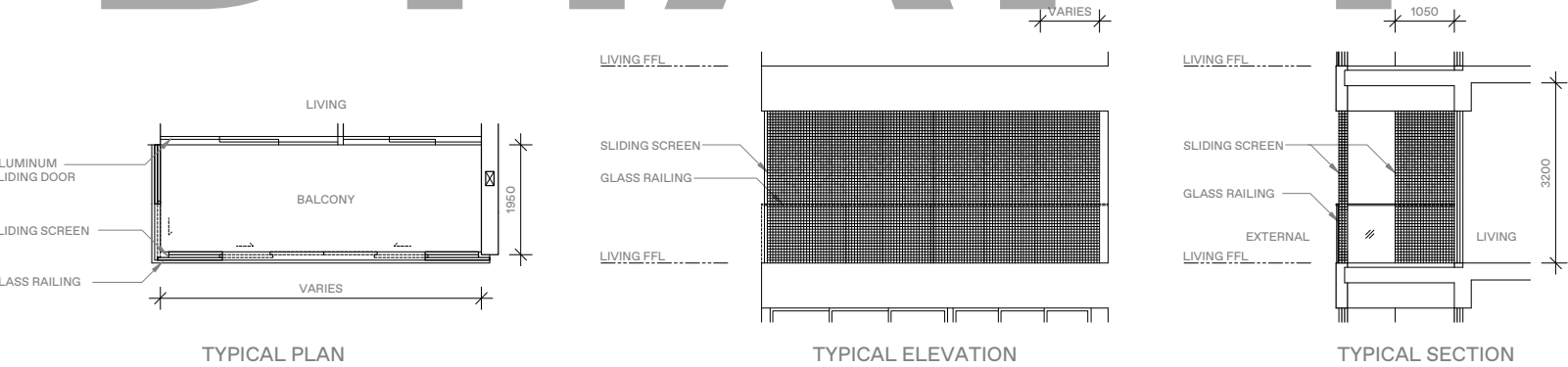
APPLICABLE FOR TYPE A2 / B2\* / B3\* / B4 / B4A / B5 / B5A\* / B7 / B7A / B8 / B9P / B9 / C2 / C2A / C3 / P3\*

- Notes:
- 1. The balcony shall not be enclosed unless with the approved balcony screen.
  - 2. The purchasers shall have to bear the costs of installing the balcony screen except for the units mentioned in Note 3.
  - 3. The balcony screen will be provided in the following units:  
(1) #18-100 - #31-100, (2) #18-101 - #31-101, (3) #18-107 - #31-107, (4) #18-108-#31-108,  
(5) #05-109 - #16-109, (6) #06-110 - #16-110, (7) #18-110 - #31-110, (8) #06-117 - #16-117, (9) #18-117 - #31-117



BALCONY SCREEN  
APPLICABLE FOR TYPE C6 / C7 / C8

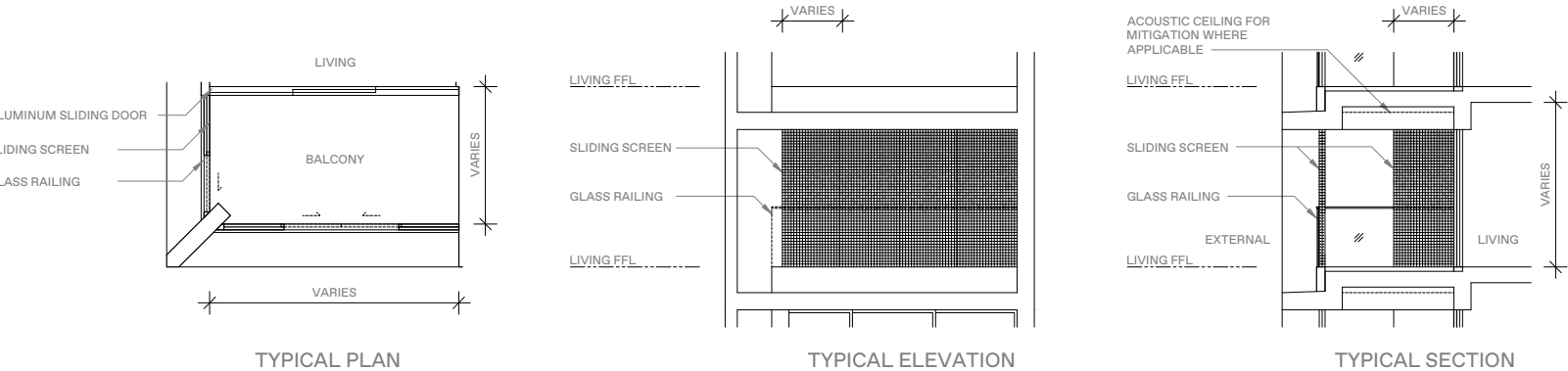
- Notes:
- 1. The balcony shall not be enclosed unless with the approved balcony screen.
  - 2. The purchasers shall have to bear the costs of installing the balcony screen.



BALCONY SCREEN

APPLICABLE FOR TYPE C4P / C4 / C9\* / C10\* / D2P / D2 / D5

- Notes:
- 1. The balcony shall not be enclosed unless with the approved balcony screen.
  - 2. The purchasers shall have to bear the costs of installing the balcony screen except for the units mentioned in Note 3.
  - 3. The balcony screen will be provided in the following units:  
(1) #05-106 - #32-106, (2) #05-111 - #32-111, (3) #06-115 - #32-115, (4) #06-116 - #32-116,



Established in 1971, Sino Group is one of Hong Kong’s leading property developers. Its core business of developing properties for sale and investment is complemented by a full range of property services as well as hotel and hospitality. The Group’s business interests comprise a diversified portfolio of residential, office, industrial, retail and hospitality properties across Hong Kong, mainland China, Singapore and Australia. It has been involved in over 250 projects, spanning more than 130 million square feet.

The Group employs more than 11,000 dynamic and committed staff members, who share the mission of building a better community.

sino.com



Far East Organization is a Christian Enterprise, which develops real estate and operates businesses by serving with grace, love, integrity and honesty. Together with its Hong Kong-based sister company Sino Group, they are one of Asia’s largest real estate groups, with operations in Singapore, Malaysia, Australia, Japan, China (Mainland and Hong Kong) and USA. Far East Organization is the largest private property developer in Singapore, having developed over 780 developments across all segments of real estate including 55,000 private homes in Singapore since its establishment in 1960. It includes three listed entities: Far East Orchard Limited, Far East Hospitality Trust and Yeo Hiap Seng Limited. Far East Organization is the winner of 13 FIABCI World Prix d’Excellence awards, the highest honour in international real estate.

fareast.com.sg

